

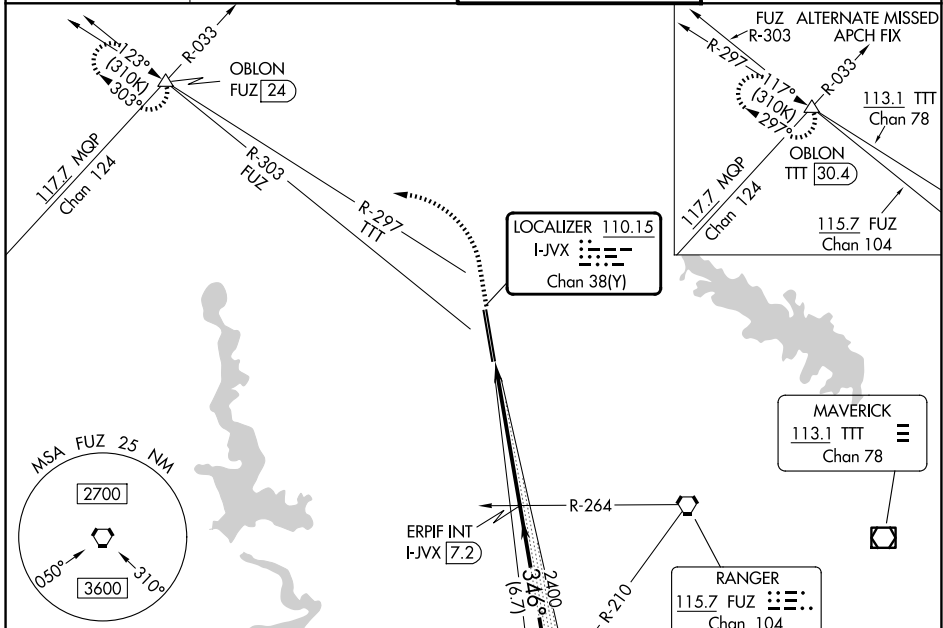
LOC/DME I-JVX 110.15 Chan 38 (Y)	APP CRS 346°	Rwy Ldg TDZE Apt Elev	34R 11000 681 723	34L 10409 687 723
--	------------------------	-----------------------------	---	---

ILS or LOC RWY 34R

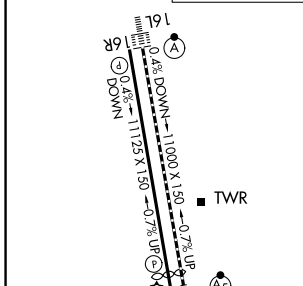
PEROT FLD/FORT WORTH ALLIANCE (AFW)

RADAR required for procedure entry.		MALSR	MISSED APPROACH: Climb to 1200 then climbing left turn to 3000 on heading 270° and FUZ VORTAC R-303 to OBLON INT/FUZ 24 DME and hold.
<p>⚠ Circling NA east of Rwy 16L-34R. For inop ALS, increase S-ILS 34R Cat E visibility to RVR 4000 and S-LOC 34R Cat E visibility to 1% SM.</p>			

ATIS 126.925	LONE STAR APP CON 118.1 306.95	ALLIANCE TOWER 135.15 257.9	GND CON 132.65 306.2
------------------------	--	---------------------------------------	--------------------------------



ELEV 723	D	TDZE 34R 681
		TDZE 34L 687



FDZ/CL Rws 16L and 34R					
HIRL Rws 16L-34R and 16R-34L					
REIL Rws 16R and 34L					
FAF to MAP 5.3 NM					
Knots	60	90	120	150	180
Min:Sec	5:18	3:32	2:39	2:07	1:46

1200	3000	OBLON	ERPIF INT I-JVX [7.2]	UCCOL INT I-JVX [13.9]
↑	hdg 270°	△	2400	3000
			2400	GS 3.00° TCH 58
			1.6 NM	3.7 NM
			6.7 NM	

CATEGORY	A	B	C	D	E
S-ILS 34R	881/18		200 (200-1/2)		
S-LOC 34R	1240/24	559 (600-1/2)	1240/60	559 (600-1/4)	
SIDESTEP 34L	1240-1	553 (600-1)	1240-1 1/2 553 (600-1/2)	1240-2	553 (600-2)
CIRCLING	1240-1 517 (600-1)	1320-1 597 (600-1)	1360-1 3/4 637 (700-1 3/4)	1360-2 637 (700-2)	1380-2 1/4 657 (700-2 1/4)

ILS or LOC RWY 34R

SC-2, 14 MAY 2026 to 11 JUN 2026

SC-2, 14 MAY 2026 to 11 JUN 2026