

LIKES FOUR ARRIVAL (RNAV)

FORT WORTH, TEXAS

SC-2, 14 MAY 2026 to 11 JUN 2026

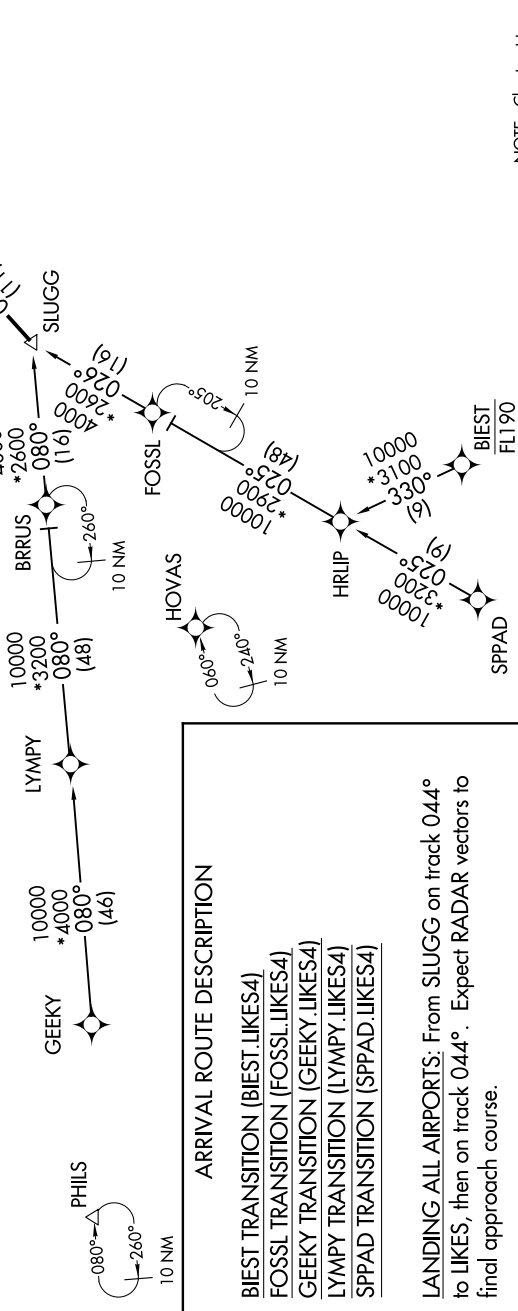
RNAV 1 - DME/DME/IRU OR GPS.
RADAR required.

LONE STAR APP CON
135.975 (N) 125.8 (S) 257.95
AFW ATIS
126.925
DTO ATIS
119.325
FTW ATIS
120.7
KNFW ATIS ★
351.675



NOTE: LYMPY Transition: For ABL terminal area departures only.
NOTE: FOSSL Transition: For ACT and GRK terminal area departures only.

Ldgs 50F/AFW/DTO/
FTW/LUD/NFW/WEA



ARRIVAL ROUTE DESCRIPTION

- BIEST TRANSITION (BIEST.LIKES4)
- FOSSL TRANSITION (FOSSL.LIKES4)
- GEEKY TRANSITION (GEEKY.LIKES4)
- LYMPY TRANSITION (LYMPY.LIKES4)
- SPPAD TRANSITION (SPPAD.LIKES4)

LANDING ALL AIRPORTS: From SLUGG on track 044° to LIKES, then on track 044°. Expect RADAR vectors to final approach course.

NOTE: Chart not to scale.

SC-2, 14 MAY 2026 to 11 JUN 2026

LIKES FOUR ARRIVAL (RNAV)

(SLUGG.LIKES4) 02OCT25

FORT WORTH, TEXAS