

WAAS CH <b>50619</b> <b>W09F</b>	APP CRS <b>096°</b>	Rwy Ldg TDZE Apt Elev	<b>6911</b> <b>9037</b> <b>9070</b>
--	------------------------	-----------------------------	---

# RNAV (GPS) X RWY 9

TELLURIDE RGNL (TEX)

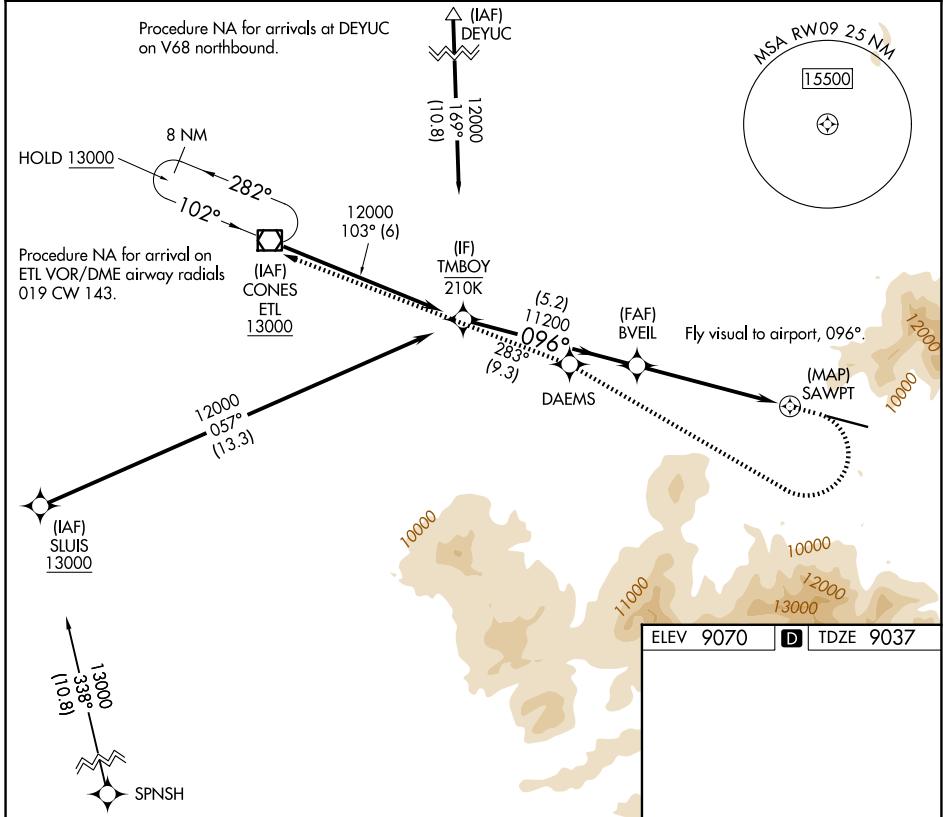
RNP APCH - GPS.

When local altimeter setting not received, procedure NA.

NA  
-17°C

MISSED APPROACH: (Do not exceed 165K until DAEMS) Climb to 10440 then climbing right turn to 15000 direct DAEMS and track 283° to ETL VOR/DME and hold.  
\*Missed approach requires minimum climb of 355 feet per NM to 12400; if unable to meet climb gradient, see RNAV (GPS) Y RWY 9.

AWOS-3 <b>118.325</b>	DENVER CENTER <b>125.35 354.05</b>	UNICOM <b>123.0 (CTAF) 0</b>
--------------------------	---------------------------------------	---------------------------------



SW-1, 14 MAY 2026 to 11 JUN 2026

SW-1, 14 MAY 2026 to 11 JUN 2026

TMBOY	10440	15000	DAEMS	ETL
	↑	↷	✦	tr 283°
12000	Fly visual to airport, 096°.			
GP 3.50° TCH 46	BVEIL	SAWPT		
	11200			
5.2 NM		4.6 NM	1.1 NM	
CATEGORY	A	B	C	D
LPV DA*	10152-3 1115 (1100-3)			NA

ELEV 9070	TDZE 9037
-----------	-----------

HIRL Rwy 9-27  
REIL Rws 9 and 27