

| | | |
|--|------------------------|--|
| WAAS CH 82637 W09B | APP CRS 096° | Rwy Ldg TDZE 6911 9038 Apt Elev 9070 |
|--|------------------------|--|

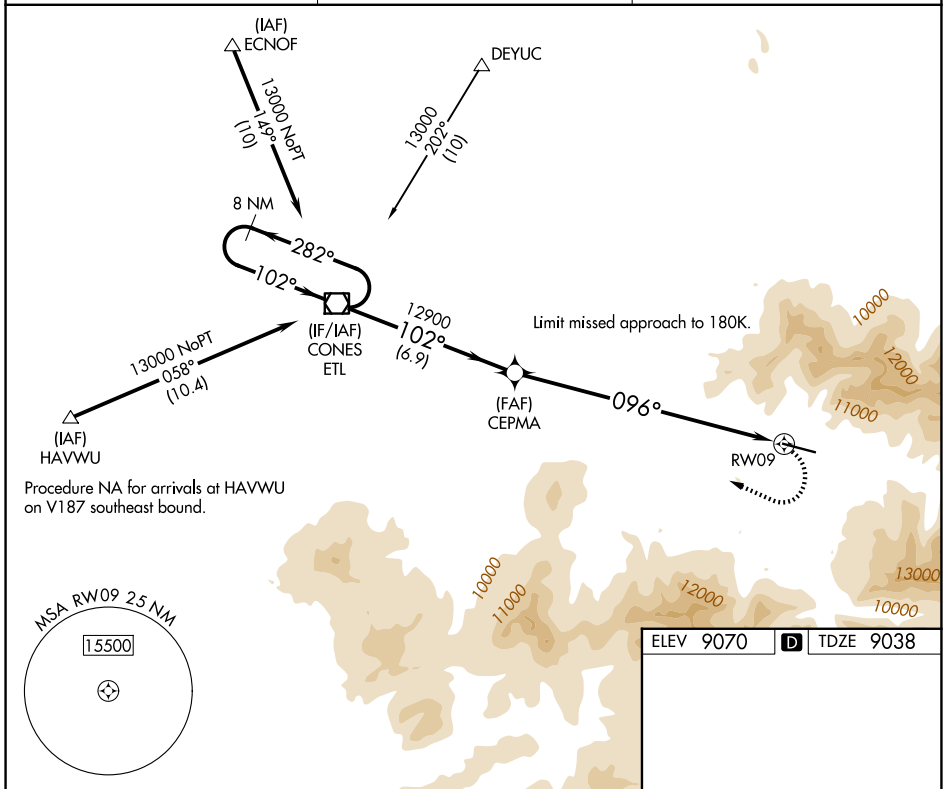
RNAV (GPS) Z RWY 9

TELLURIDE RGNL (TEX)

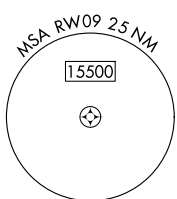
⚠ Circling NA at night. When local altimeter setting not received, procedure NA.
⚠ Circling NA north of Rwy 9-27. DME/DME RNP-0.3 NA.
⚠ -17°C *Missed approach requires a minimum climb of 380 feet per NM to 12500; if unable to meet climb gradient, see RNAV (GPS) Y RWY 9.

MISSED APPROACH: Climbing right turn to 15000 direct ETL VOR/DME and hold, continue climb-in-hold to 15000.

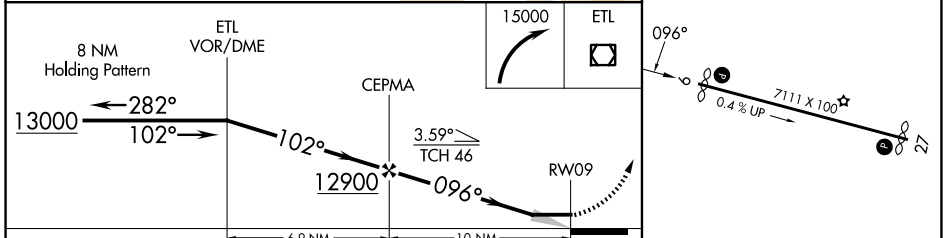
| | | |
|--------------------------|---------------------------------------|---------------------------------|
| AWOS-3 118.325 | DENVER CENTER 125.35 354.05 | UNICOM 123.0 (CTAF) ① |
|--------------------------|---------------------------------------|---------------------------------|



Procedure NA for arrivals at HAVWU on V187 southeast bound.



| | | |
|-----------|----------|-----------|
| ELEV 9070 | D | TDZE 9038 |
|-----------|----------|-----------|



| CATEGORY | A | B | C | D |
|----------|----------------------------|----------------------------|--------------------------|----|
| LP MDA* | 10640-1¼ 1602 (1600-1¼) | 10640-1½ 1602 (1600-1½) | 10640-3 1602 (1600-3) | NA |
| CIRCLING | 11640-1¼ 2570 (2600-1¼) | 11640-1½ 2570 (2600-1½) | 11640-3 2570 (2600-3) | NA |

HIRL Rwy 9-27 ①
REIL Rws 9 and 27 ①

SW-1, 14 MAY 2026 to 11 JUN 2026

SW-1, 14 MAY 2026 to 11 JUN 2026