

VOR/DME ETL 116.95 Chan 116(Y)	APP CRS 095°	Rwy Ldg TDZE Apt Elev N/A N/A 9070
--	------------------------	---

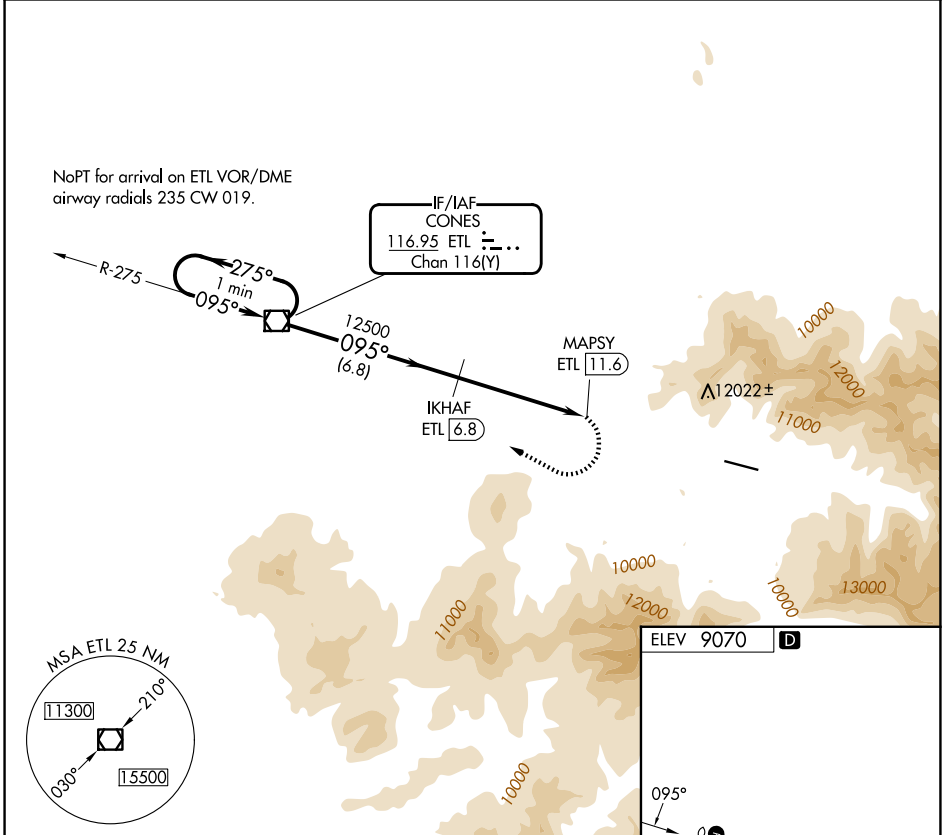
VOR/DME-A

TELLURIDE RGNL (TEX)

⚠ Circling NA north of Rwy 9-27.
⚠ Procedure NA at night.

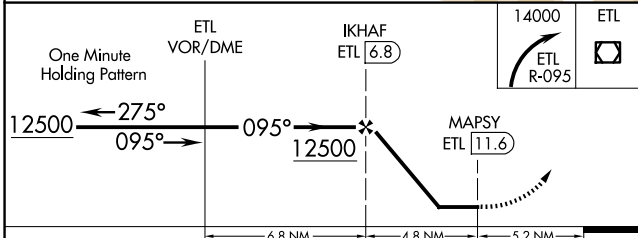
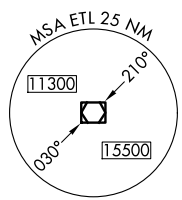
⚠ MISSED APPROACH: Immediate climbing right turn to 14000 via ETL VOR/DME R-095 to ETL VOR/DME and hold.

AWOS-3 118.325	DENVER CENTER 125.35 354.05	UNICOM 123.0 (CTAF) 1
--------------------------	---------------------------------------	---------------------------------

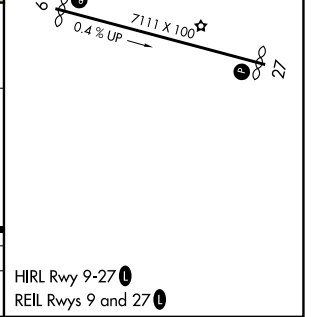


SW-1, 14 MAY 2026 to 11 JUN 2026

SW-1, 14 MAY 2026 to 11 JUN 2026



CATEGORY	A	B	C	D
CIRCLING	12420-6	3350 (3400-6)	NA	NA



HIRL Rwy 9-27 **1**
 REIL Rwys 9 and 27 **1**