

WAAS CH <b>53420</b> <b>W24A</b>	APP CRS <b>241°</b>	Rwy ldg TDZE Apt Elev	<b>8120</b> <b>6771</b> <b>6814</b>
--	------------------------	-----------------------------	---

# RNAV (GPS) RWY 24

SIERRA BLANCA RGNL (S.R.R.)

RNP APCH - GPS.

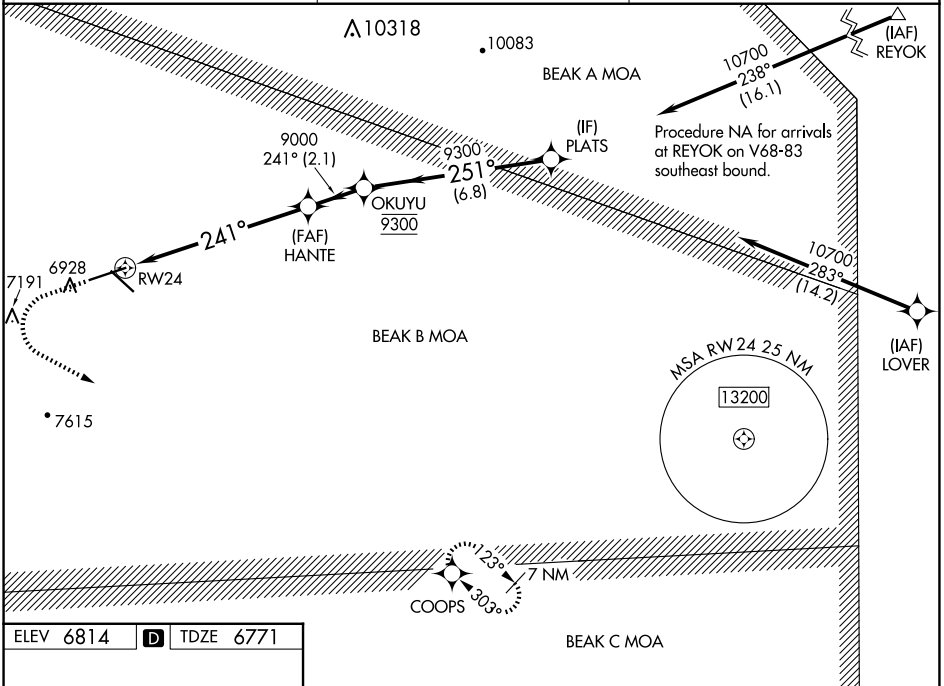
- When local altimeter setting not received, procedure NA.
- For uncompensated Baro-VNAV systems, LNAV/VNAV NA below -28°C or above 54°C. Circling Rwy 12 NA at night.

MISSED APPROACH: Climb to 7500 then climbing left turn to 10000 direct COOPS and hold.

AWOS-3  
**126.475**

ALBUQUERQUE CENTER  
**132.65 257.6**

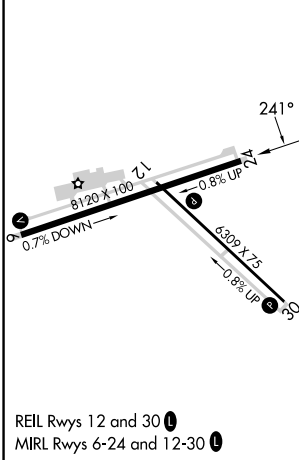
UNICOM  
**122.8 (CTAF)**



SW-1, 14 MAY 2026 to 11 JUN 2026

SW-1, 14 MAY 2026 to 11 JUN 2026

ELEV 6814 TDZE 6771



	7500	10000	COOPS	
	↑	↶	✦	
				HANTE OKUYU PLATS
				9000 9300 10700
				241° 251°
				1.9 NM 5.1 NM 2.1 NM 6.8 NM
				GP 3.00° TCH 51
CATEGORY	A	B	C	D
LPV DA	6971-3/4		200 (200-3/4)	
LNAV/VNAV DA	7220-13/8		449 (500-13/8)	
LNAV MDA	7380-1	609 (600-1)	7380-13/4	609 (600-13/4)
CIRCLING	7380-1	566 (600-1)	7600-21/4 786 (800-21/4)	7860-3 1046 (1100-3)