

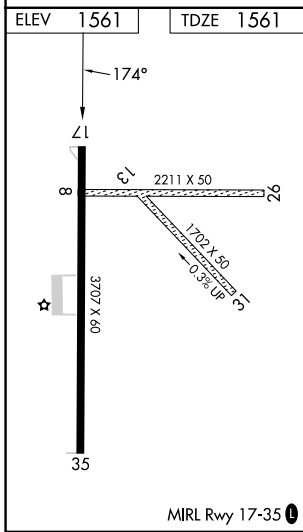
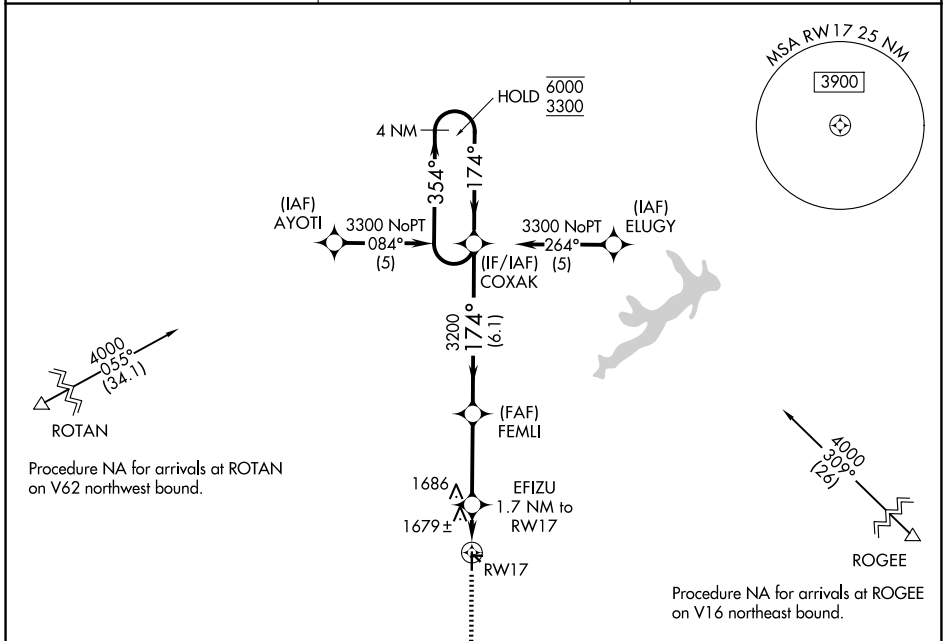
APP CRS	Rwy Ldg	<b>3707</b>
<b>174°</b>	TDZE	<b>1561</b>
	Apt Elev	<b>1561</b>

# RNAV (GPS) RWY 17

ARLEDGE FLD (F56)

RNP APCH - GPS.	Circling NA to Rwys 8, 13, 26 and 31. Use ABL altimeter setting; when not received, use BKD altimeter setting and increase all MDAs 40 feet and Circling visibility Cat C ¼ SM. Procedure NA at night.	MISSED APPROACH: Climb to 3300 direct HINTA and hold.
⚠ NA		

ABI ASOS <b>118.25</b>	ABILENE APP CON <b>127.2 282.3</b>	UNICOM <b>122.8 (CTAF) 0</b>
---------------------------	---------------------------------------	---------------------------------



ELEV 1561	TDZE 1561	MISSED APCH FIX HINTA			
3300	HINTA	FEMLI	COXAK	4 NM Holding Pattern	
EFIZU 1.7 NM to RW17	3200	3200	3200	6000	3300
1.7 NM	3.3 NM	6.1 NM			
CATEGORY	A	B	C	D	
LNAV MDA	2040-1	479 (500-1)	2040-1 3/8 479 (500-1 3/8)	NA	
CIRCLING	2100-1 539 (600-1)	2200-1 639 (700-1)	2220-1 3/4 659 (700-1 3/4)	NA	

SC-2, 14 MAY 2026 to 11 JUN 2026

SC-2, 14 MAY 2026 to 11 JUN 2026