

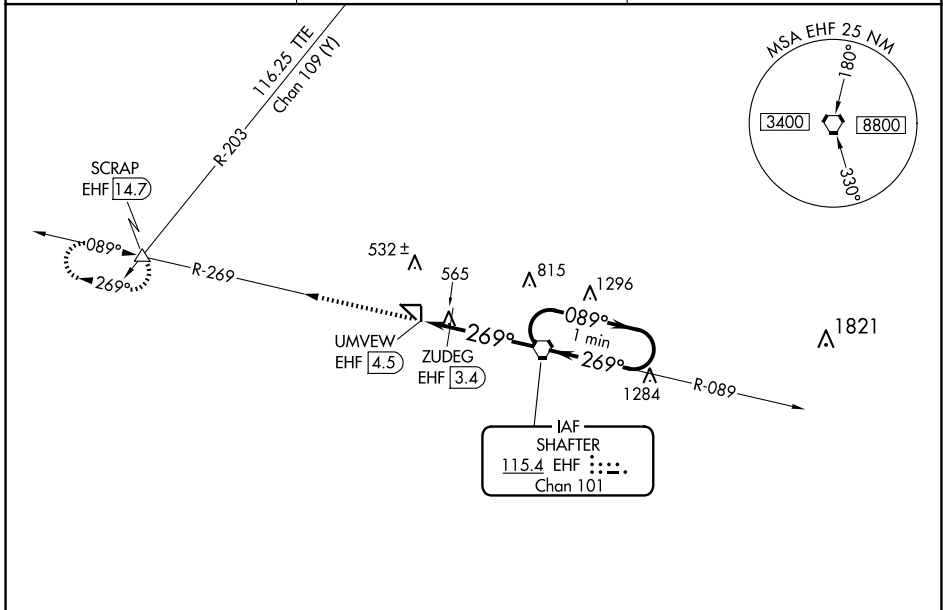
| | | | |
|---|------------------------|-----------------------------|--|
| VORTAC EHF 115.4 Chan 101 | APP CRS 269° | Rwy Idg TDZE Apt Elev | N/A N/A 425 |
|---|------------------------|-----------------------------|--|

VOR-A
SHAFTER-MINTER FLD (MIT)

NA Circling to Rwy 17, 35, 8 and 26 NA at night. When local altimeter setting not received, use Bakersfield altimeter setting and increase all MDAS 40 feet and increase Cat C visibility to 1 3/4.

MISSED APPROACH: Climb to 4000 on EHF VORTAC R-269 to SCRAP INT/EHF 14.7 DME and hold, continue climb-in-hold to 4000.

| | | |
|--------------------------|--|----------------------|
| AWOS-3 121.125 | BAKERSFIELD APP CON * 126.45 270.3 | CTAF 122.9 |
|--------------------------|--|----------------------|



SW-3, 14 MAY 2026 to 11 JUN 2026

SW-3, 14 MAY 2026 to 11 JUN 2026

