

APP CRS 133°	Rwy Ldg TDZE Apt Elev	3799 129 129
------------------------	-----------------------------	---

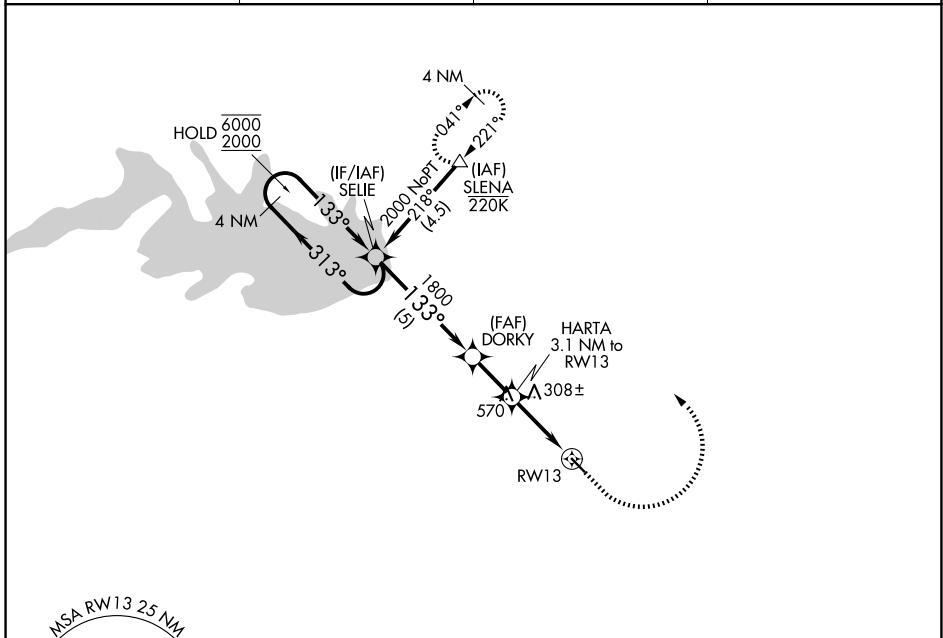
RNAV (GPS) RWY 13

LIVE OAK COUNTY (8T6)

RNP APCH - GPS.
 Rwy 13 helicopter visibility reduction below 3/4 SM NA.

MISSED APPROACH: Climb to 700 then climbing left turn to 2000 direct SLENA and hold.

AWOS-3PT 119.05	HOUSTON CENTER 134.6 322.5	CTAF 122.9	122.7 0
---------------------------	--------------------------------------	----------------------	----------------



SC-3, 14 MAY 2026 to 11 JUN 2026

SC-3, 14 MAY 2026 to 11 JUN 2026

