

VORTAC CRP 115.5 Chan 102	APP CRS 051°	Rwy Ldg TDZE Apt Elev	N/A N/A 80
---	------------------------	-----------------------------	---------------------------------------

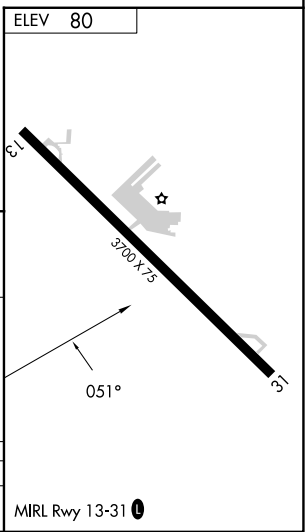
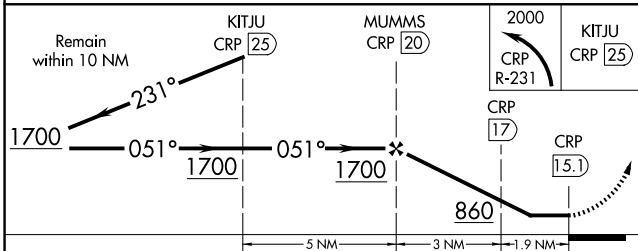
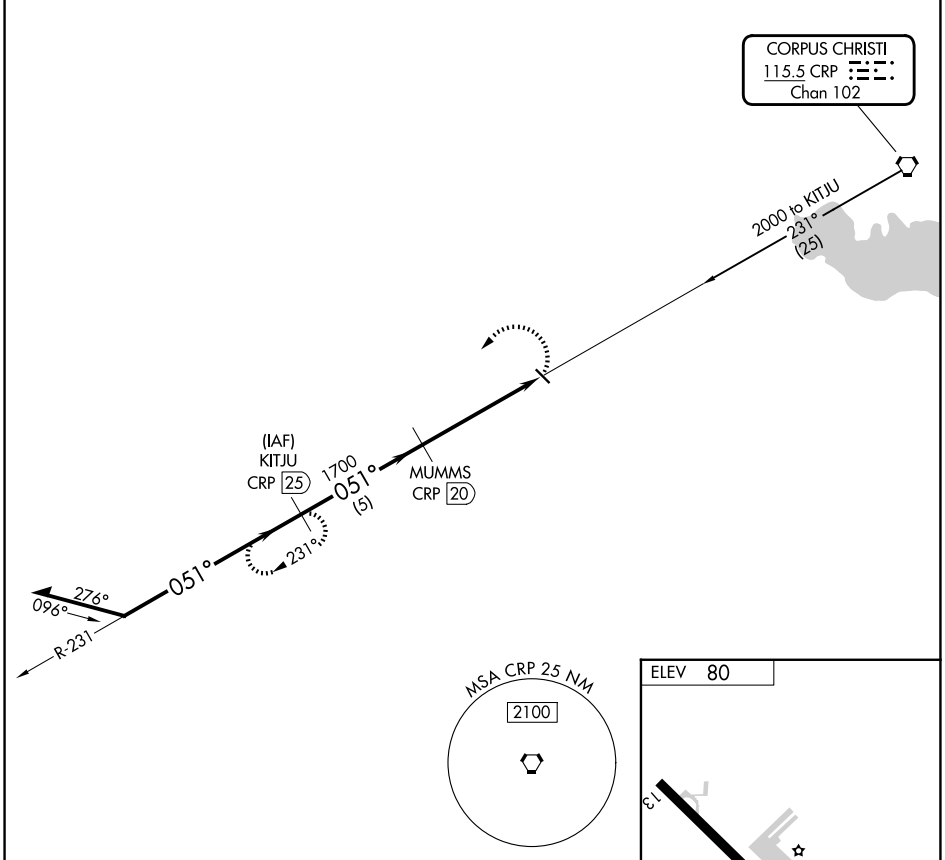
VOR/DME-A

NUECES COUNTY (RBO)

NA When local altimeter setting not received, use Corpus Christi Intl altimeter setting. Circling not authorized northeast of Rwy 13-31.

MISSED APPROACH: Climbing left turn to 2000 via CRP R-231 to KITJU/CRP 25 DME and hold.

AWOS-3 118.175	CORPUS APP CON ★ 120.9 348.725	CTAF 122.9	122.8 0
--------------------------	--	----------------------	-----------------------



CATEGORY	A	B	C	D
CIRCLING	660-1	580 (600-1)	NA	NA

MIRL Rwy 13-31 **0**

SC-3, 14 MAY 2026 to 11 JUN 2026

SC-3, 14 MAY 2026 to 11 JUN 2026