

WESLACO, TEXAS

AL-6930 (FAA)

26078

VOR/DME MFE 117.2 Chan 119	APP CRS 080°	Rwy Ldg TDZE Apt Elev 70	N/A N/A 70
--	------------------------	---------------------------------------	-------------------------

VOR-A
MID VALLEY (TXW)

DME required.

⚠ When local altimeter not received, use McAllen altimeter setting and increase all MDA 40 feet.

MISSED APPROACH: Climb to 1000 then climbing left turn to 2000 direct MFE VOR/DME.

AWOS-3PT
118.575

VALLEY APP CON
126.55 377.2

CLNC DEL
125.95

UNICOM
122.8 (CTAF) 0

Procedure NA for arrival on MFE VOR/DME airway radials 029 CW 075.

IF/IAF
MC ALLEN
117.2 MFE
Chan **119**

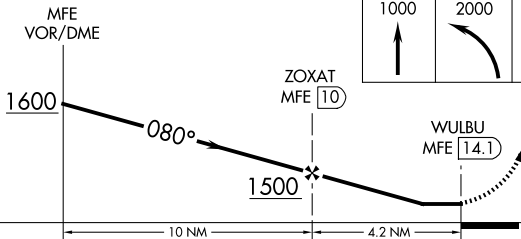
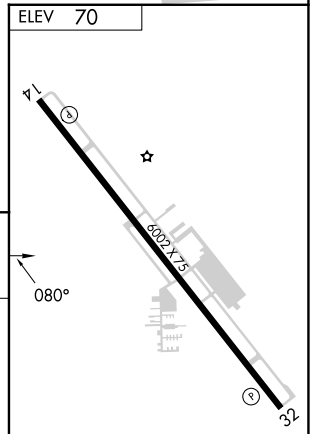
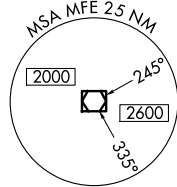
ZOXAT
MFE **10**

WULBU
MFE **14.1**

1500
080°
(10)

Λ
268

UNITED STATES
MEXICO



CATEGORY	A	B	C	D
CIRCLING	620-1	550 (600-1)	700-1¾ 630 (700-1¾)	NA

MIRL Rwy 14-32 0
REIL Rwy 32 0

WESLACO, TEXAS
Orig-C 25JAN24

26°11'N-97°58'W

MID VALLEY (TXW)
VOR-A

SC-3, 14 MAY 2026 to 11 JUN 2026

SC-3, 14 MAY 2026 to 11 JUN 2026