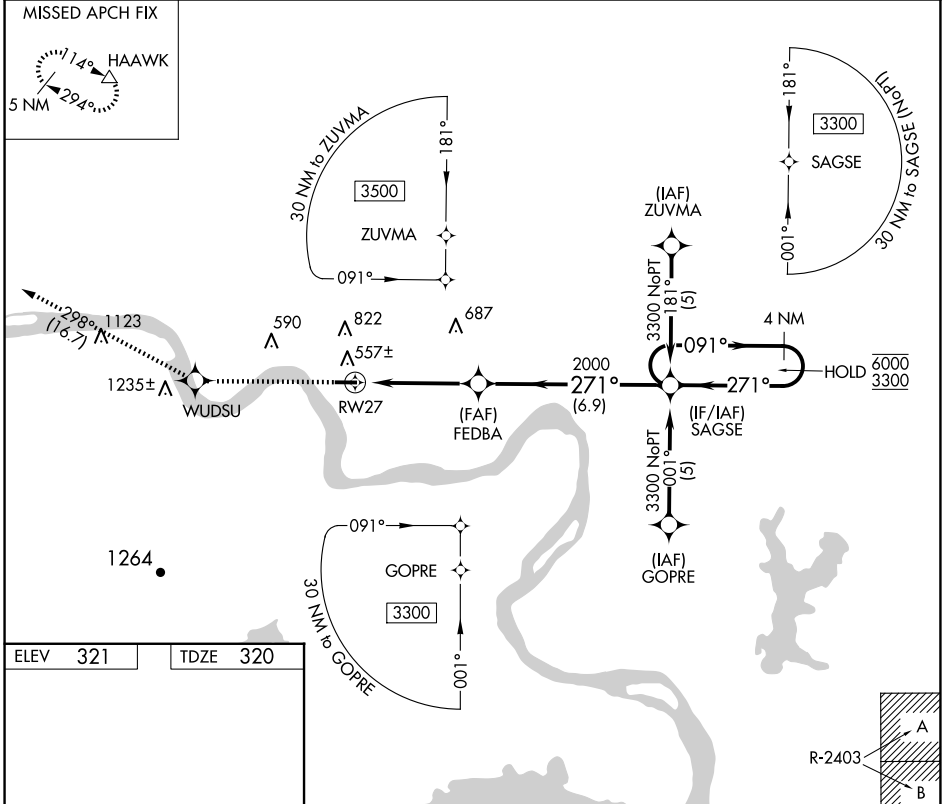


APP CRS	Rwy Idg	<b>3998</b>
<b>271°</b>	TDZE	<b>320</b>
	Apt Elev	<b>321</b>

# RNAV (GPS) RWY 27

MORRILTON MUNI (BDQ)

RNP APCH - GPS.		MISSED APPROACH: Climb to 4500 direct WUDSU and on track 298° to HAAWK and hold.	
<p>▼ Use RUE altimeter setting; when not received, use LIT altimeter setting and increase all MDAs 40 feet and LNAV visibility Cat B ¼ SM, and Circling Cat B visibility ¼ SM.</p> <p>▲ NA</p>		RUE AWOS	MEMPHIS CENTER
		<b>132.475</b>	<b>128.475 377.15</b>
		UNICOM	<b>122.8 (CTAF)</b>
			<b>122.9</b>



ELEV	321	TDZE	320
------	-----	------	-----

MIRL Rwy 9-27

4500	WUDSU	HAAWK	SAGSE	
↑	✧	tr 298°	4 NM Holding Pattern	
		△		
	FEDBA		6000	
	2000		3300	
	RW27 3.50° TCH 47		091° →	
	4.4 NM		← 271°	
	6.9 NM			
CATEGORY	A	B	C	D
LNAV MDA	1060-1	740 (800-1)	NA	
CIRCLING	1060-1	1260-1¼	NA	
	739 (800-1)	939 (1000-1¼)		

SC-1, 14 MAY 2026 to 11 JUN 2026

SC-1, 14 MAY 2026 to 11 JUN 2026