

| | | |
|---------------------------|------------------------|---|
| LOC I-UXL 109.3 | APP CRS 146° | Rwy Idg 5001 TDZE 10 Apt Elev 10 |
|---------------------------|------------------------|---|

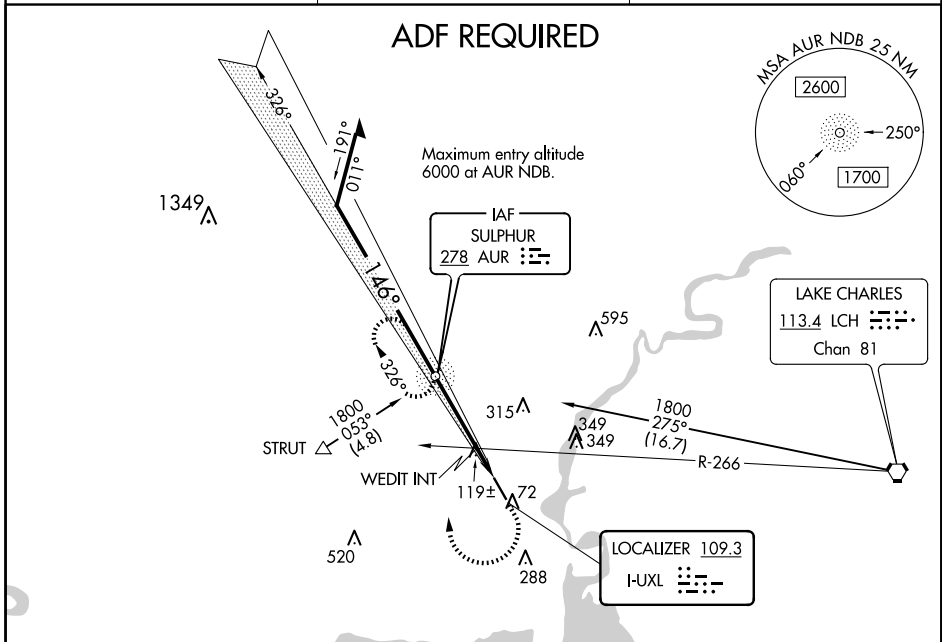
LOC RWY 15
SOUTHLAND FLD (UXL)

⚠ Inoperative table does not apply to S-15 Cat C. Visibility reduction by helicopters NA. When local altimeter setting not received, use Lake Charles Rgnl altimeter setting and increase all MDA 20 feet and Circling visibility Cat C/D ¼ SM.

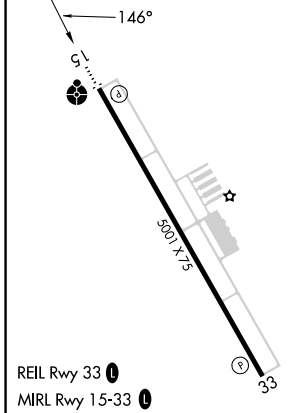
ODALS

MISSED APPROACH: Climb to 500 then climbing right turn to 2400 direct AUR NDB and hold, continue climb-in-hold to 2400.

| | | |
|----------------------------|---|---------------------------------|
| AWOS-3PT 118.175 | LAKE CHARLES APP CON * 119.35 282.3 | UNICOM 122.8 (CTAF) 0 |
|----------------------------|---|---------------------------------|



| | |
|---------|---------|
| ELEV 10 | TDZE 10 |
|---------|---------|

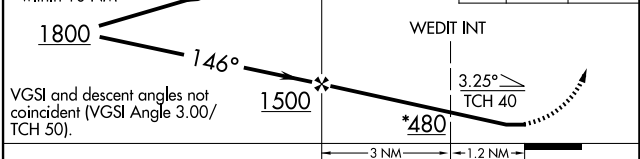


*500 when using Lake Charles Rgnl altimeter setting.

Remain within 10 NM

AUR NDB

500 2400 AUR



VGSI and descent angles not coincident (VGSI Angle 3.00/TCH 50).

| CATEGORY | A | B | C | D |
|--------------------|----------------------|----------------------|------------------------|------------------------|
| S-15 | 480-¾ | 470 (500-¾) | 480-1¼ 470 (500-1¼) | 480-1½ 470 (500-1½) |
| CIRCLING | 480-1 470 (500-1) | 520-1 510 (600-1) | 680-1¾ 670 (700-1¾) | 680-2 670 (800-2) |
| WEDIT FIX MINIMUMS | | | | |
| S-15 | 380-¾ 370 (400-¾) | | | 380-1¼ 370 (400-1¼) |
| CIRCLING | 420-1 410 (500-1) | 520-1 510 (600-1) | 680-1¾ 670 (700-1¾) | 680-2 670 (700-2) |

| | | | | | |
|-------------------|------|------|------|------|------|
| FAF to MAP 4.2 NM | | | | | |
| Knots | 60 | 90 | 120 | 150 | 180 |
| Min:Sec | 4:12 | 2:48 | 2:06 | 1:41 | 1:24 |

SC-4, 14 MAY 2026 to 11 JUN 2026

SC-4, 14 MAY 2026 to 11 JUN 2026