

APP CRS	Rwy Ldg	<b>6101</b>
<b>181°</b>	TDZE	<b>5024</b>
	Apt Elev	<b>5024</b>

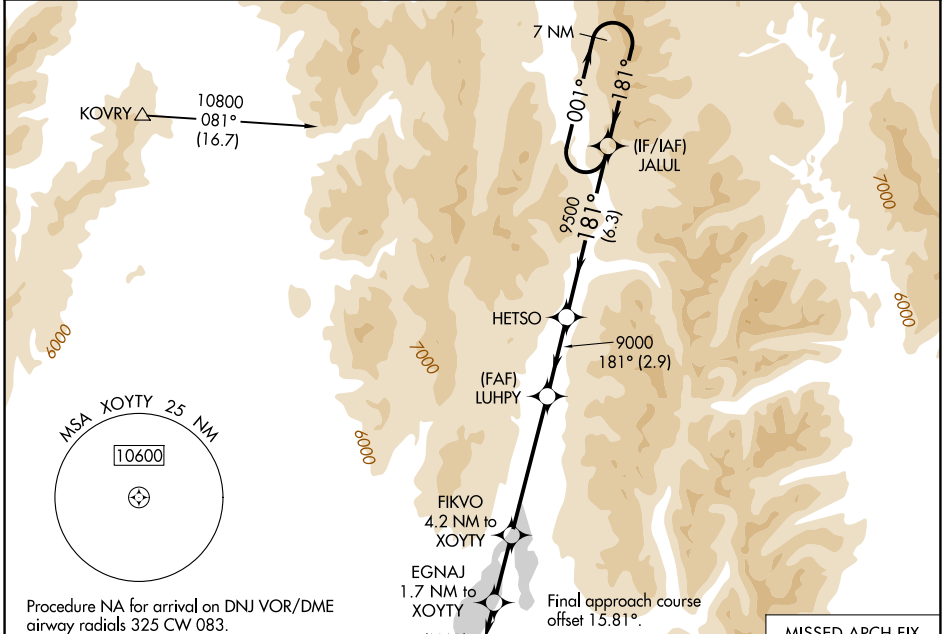
# RNAV (GPS) RWY 16

MC CALL MUNI (MYL)

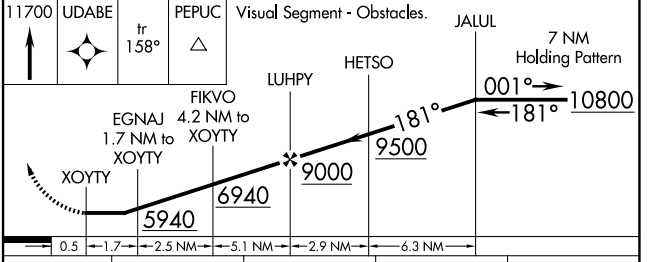
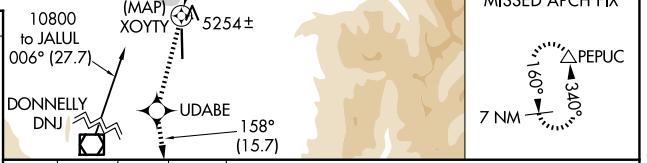
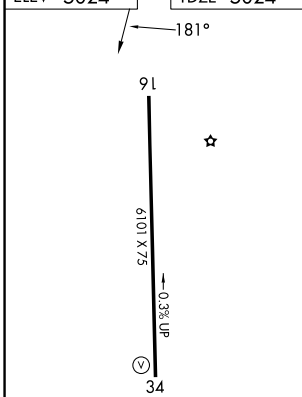
**⚠** Rwy 16 helicopter visibility reduction below 1 SM NA.  
**⚠** DME/DME RNP-0.3 NA.  
**⚠** -19°C Straight-in Rwy 16 NA at night, Circling Rwy 16 NA at night.

MISSED APPROACH: Climb to 11700 direct UDABE and on track 158° to PEPUC and hold, continue climb-in-hold to 11700.

ASOS <b>119.925</b>	SALT LAKE CENTER <b>128.05 306.95</b>	UNICOM <b>122.8 (CTAF)</b>
------------------------	--	-------------------------------



ELEV 5024 TDZE 5024



CATEGORY	A	B	C	D
LNAV MDA	5520-1	496 (500-1)	5520-1 $\frac{3}{8}$ 496 (500-1 $\frac{3}{8}$ )	NA
CIRCLING	5940-1 $\frac{1}{4}$	916 (1000-1 $\frac{1}{4}$ )	6140-3 1116 (1200-3)	NA

MIRL Rwy 16-34  
 REIL Rws 16 and 34

NW-1, 14 MAY 2026 to 11 JUN 2026

NW-1, 14 MAY 2026 to 11 JUN 2026