

WAAS CH 49016 W34A	APP CRS 346°	Rwy Ldg TDZE Apt Elev	6101 5012 5024
--	------------------------	-----------------------------	---

RNAV (GPS) RWY 34

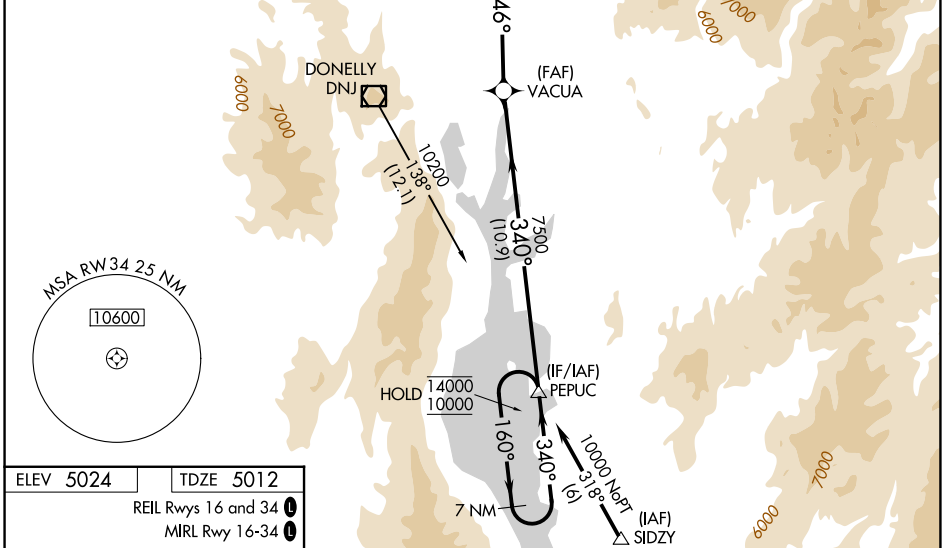
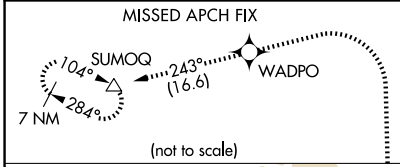
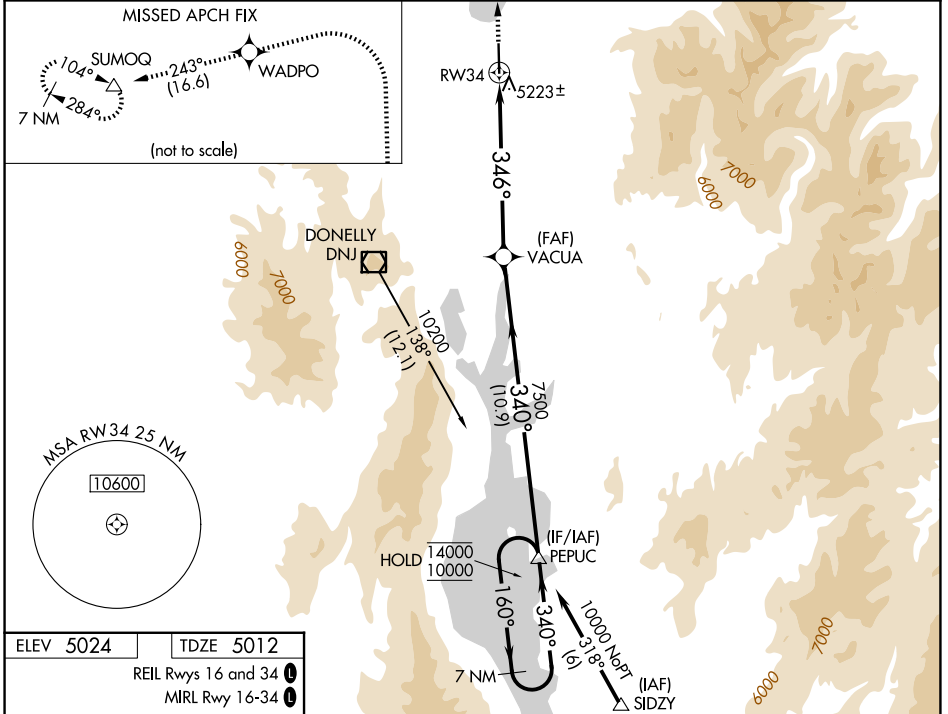
MC CALL MUNI (MYL)

RNP APCH - GPS.

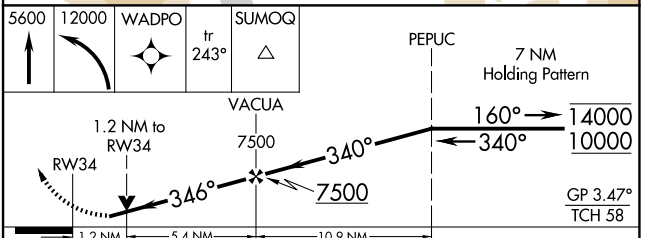
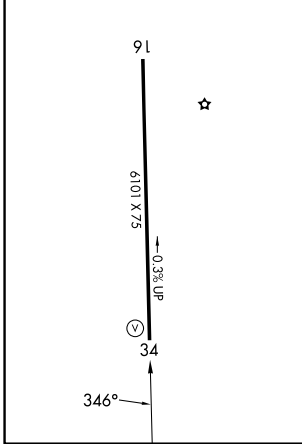
For uncompensated Baro-VNAV systems, LNAV/VNAV NA below -24°C or above 40°C. When local altimeter setting not received, procedure NA. Rwy 34 helicopter visibility reduction below 3/4 SM NA. Circling Rwy 16 NA at night.

MISSED APPROACH: Climb to 5600, then climbing left turn to 2000 direct WADPO and on track 243° to SUMOQ and hold, continue climb-in-hold to 12000. *Missed approach requires minimum climb of 265 feet per NM to 6380.

ASOS 119.925	SALT LAKE CENTER 128.05 306.95	UNICOM 122.8 (CTAF) 0
------------------------	--	---------------------------------



ELEV 5024	TDZE 5012
REIL Rwy 16 and 34	MIRL Rwy 16-34



CATEGORY	A	B	C	D
LPV DA	5375-1 363 (400-1)			
LNAV/VNAV DA	5683-1 671 (700-1 1/2)			
LNAV MDA*	5520-1	508 (500-1)	5520-1 3/8	508 (500-1 3/8)
LNAV MDA	5680-1	668 (700-1)	5680-1 7/8	668 (700-1 7/8)
CIRCLING	5700-1 676 (700-1)	5920-1 1/4 896 (900-1 1/4)	6140-3 1116 (1200-3)	6660-3 1636 (1700-3)

NW-1, 14 MAY 2026 to 11 JUN 2026

NW-1, 14 MAY 2026 to 11 JUN 2026