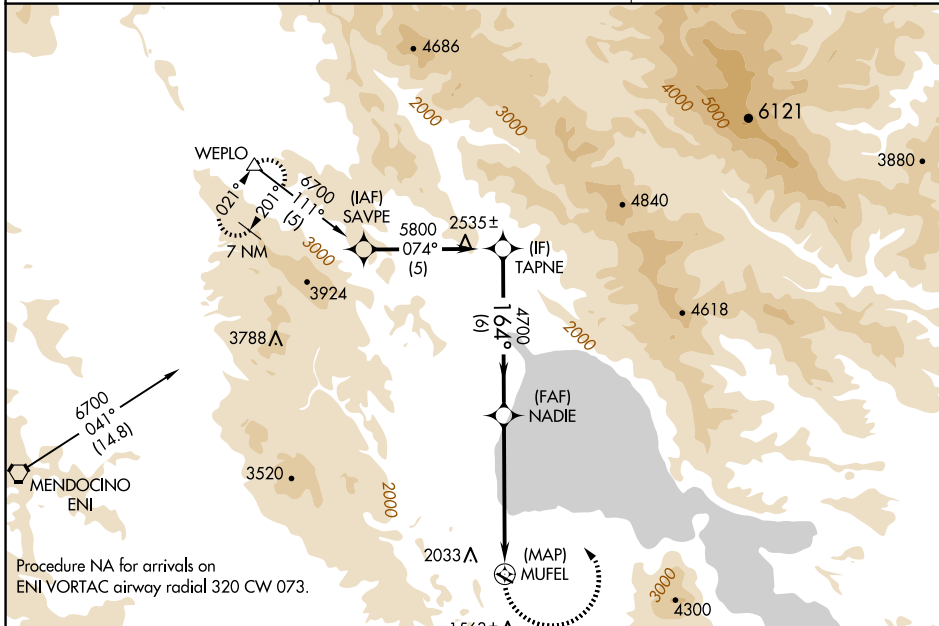


APP CRS <b>164°</b>	Rwy Idg TDZE Apt Elev	<b>N/A</b> <b>N/A</b> <b>1380</b>
------------------------	-----------------------------	---

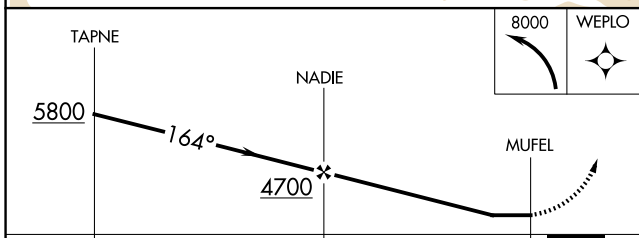
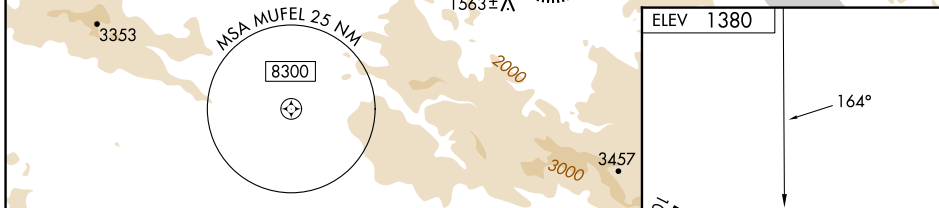
# RNAV (GPS)-A

LAMPSON FLD (102)

<p><b>NA</b></p> <p>Circling NA south of Rwy 10-28. DME/DME RNP-0.3 NA. Procedure NA at night. When local altimeter setting not received, use Ukiah altimeter setting and increase all MDA 560 feet.</p>	<p>MISSED APPROACH: Climbing left turn to 8000 direct WEPLO and hold.</p>	
<p>AWOS-3 <b>118.35</b></p>	<p>OAKLAND CENTER <b>127.8 353.5</b></p>	<p>UNICOM <b>122.8 (CTAF)</b></p>



Procedure NA for arrivals on ENI VORTAC airway radial 320 CW 073.



CATEGORY	A	B	C	D
CIRCLING	2580-1¼ 1200 (1200-1¼)	2580-1½ 1200 (1200-1½)	NA	

ELEV 1380

164°

3600 X 60

0.3% UP

MIRL Rwy 10-28

SW-2, 14 MAY 2026 to 11 JUN 2026

SW-2, 14 MAY 2026 to 11 JUN 2026