

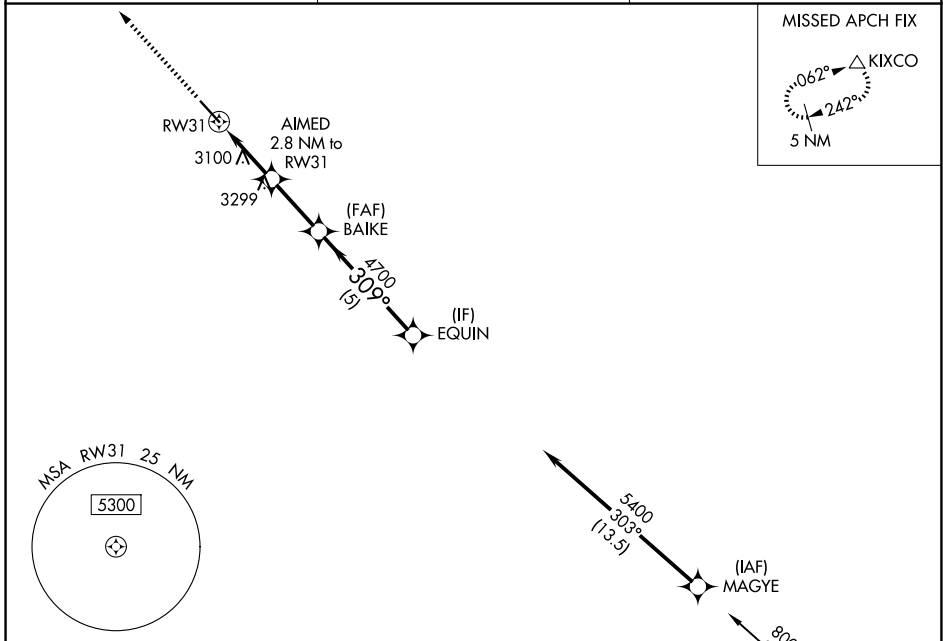
WAAS CH 50138 W31A	APP CRS 309°	Rwy Ldg TDZE Apt Elev	5904 2981 2981
--	------------------------	-----------------------------	---

RNAV (GPS) RWY 31

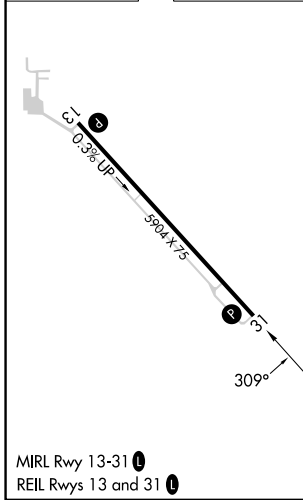
BAKER MUNI (BHK)

RNP APCH.	MISSED APPROACH: Climb to 3500 then climbing right turn 6000 direct KIXCO and hold.
For uncompensated Baro-VNAV systems, LNAV/VNAV NA below -27°C or above 54°C. When local altimeter setting not received, procedure NA.	

ASOS 135.475	SALT LAKE CENTER 126.85 305.2	CTAF 122.9 0
------------------------	---	------------------------

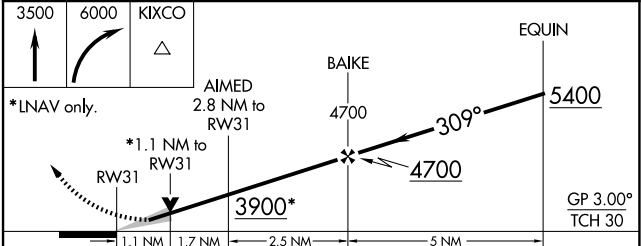


ELEV 2981	TDZE 2981
-----------	-----------



MIRL Rwy 13-31
REIL Rwy 13 and 31

Procedure NA for arrivals at DIXLE on V491 southbound and on V120 eastbound.



CATEGORY	A	B	C	D
LPV DA		3231- $\frac{7}{8}$	250 (300- $\frac{7}{8}$)	
LNAV/VNAV DA		3267-1	286 (300-1)	
LNAV MDA		3360-1	379 (400-1)	
CIRCLING	3540-1	559 (600-1)	3620-1 $\frac{3}{4}$ 639 (700-1 $\frac{3}{4}$)	3820-2 $\frac{3}{4}$ 839 (900-2 $\frac{3}{4}$)

NW-1, 14 MAY 2026 to 11 JUN 2026

NW-1, 14 MAY 2026 to 11 JUN 2026