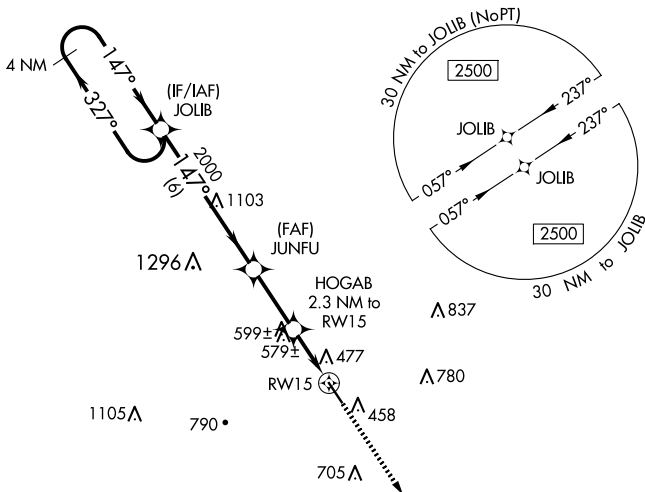


WAAS CH <b>49234</b> <b>W15A</b>	APP CRS <b>147°</b>	Rwy Idg TDZE Apt Elev	<b>5003</b> <b>392</b> <b>392</b>
--	------------------------	-----------------------------	---

# RNAV (GPS) RWY 15

BOONEVILLE/BALDWIN (8M1)

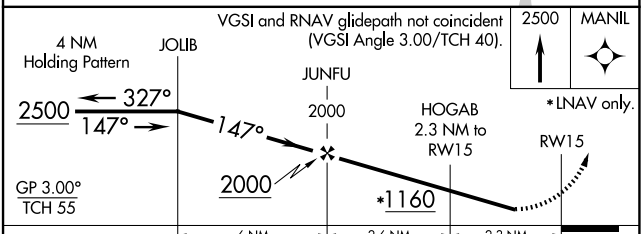
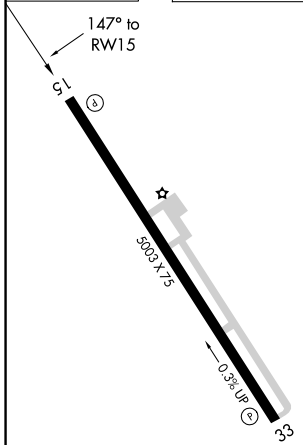
RNP APCH.		MISSED APPROACH: Climb to 2500 direct MANIL and hold.
<p><b>▼</b> Baro-VNAV NA. Use Corinth altimeter setting, when not received use Tupelo altimeter setting and increase all DA 4 feet, and all MDA 20 feet. Rwy 15 helicopter visibility reduction below 3/4 SM NA.</p> <p><b>▲</b> NA</p>		
CRX AWOS-3PT <b>118.675</b>	MEMPHIS CENTER <b>135.9 273.55</b>	UNICOM <b>122.8 (CTAF) 0</b>



SC-4, 14 MAY 2026 to 11 JUN 2026

SC-4, 14 MAY 2026 to 11 JUN 2026

ELEV 392	TDZE 392
----------	----------



CATEGORY	A	B	C	D
LPV DA		777-1¼	385 (400-1¼)	
LNAV/VNAV DA		842-1½	450 (500-1½)	
LNAV MDA	880-1	488 (500-1)	880-1¾	488 (500-1¾)

MIRL Rwy 15-33 **0**  
REIL Rwy 15 and 33