

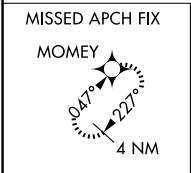
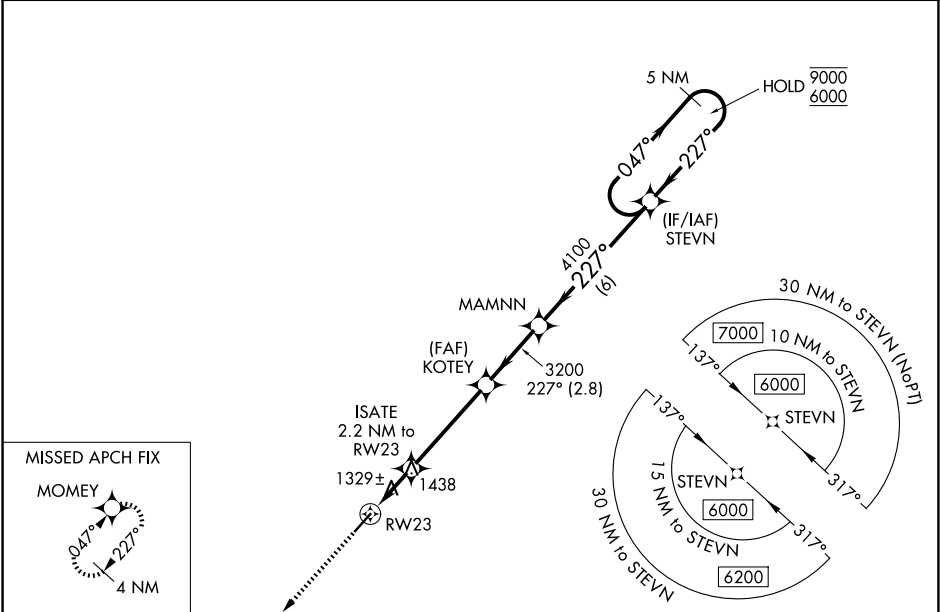
WAAS CH <b>65923</b> <b>W23A</b>	APP CRS <b>227°</b>	Rwy Ldg TDZE Apt Elev	<b>5003</b> <b>1219</b> <b>1220</b>
--	------------------------	-----------------------------	---

# RNAV (GPS) RWY 23

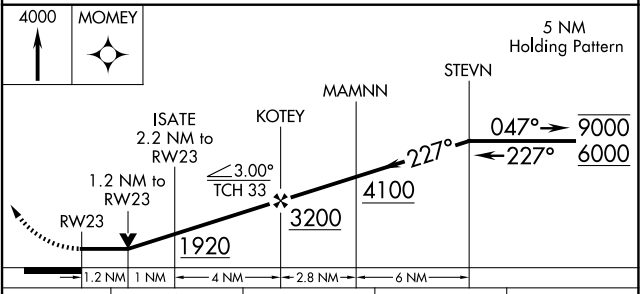
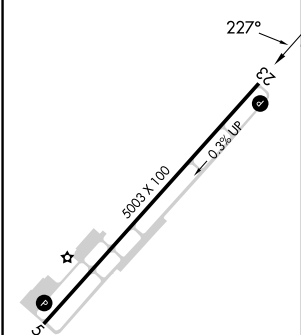
CHEROKEE COUNTY RGNL (CNI)

RNP APCH - GPS.		MISSED APPROACH: Climb to 4000 direct MOMY and hold, continue climb-in-hold to 4000.
<p>▼</p> <p>▲ Rwy 23 helicopter visibility reduction below ¾ SM NA.</p>		

AWOS-3PT <b>119,825</b>	ATLANTA APP CON <b>121.0 268.7</b>	UNICOM <b>123.0 (CTAF) 0</b>
----------------------------	---------------------------------------	---------------------------------



ELEV 1220	TDZE 1219
-----------	-----------



CATEGORY	A	B	C	D
LP MDA	1600-1	381 (400-1)	1600-1½ 381 (400-1½)	NA
LNAV MDA	1740-1	521 (600-1)	1740-1½ 521 (600-1½)	NA
CIRCLING	1740-1	520 (600-1)	1820-1½ 600 (700-1½)	NA

REIL Rwy 5 and 23  
MIRL Rwy 5-23

SE-4, 14 MAY 2026 to 11 JUN 2026

SE-4, 14 MAY 2026 to 11 JUN 2026