

APP CRS	Rwy Ldg	3901
128°	TDZE	933
	Apt Elev	933

RNAV (GPS) RWY 13

CASSELTON ROBERT MILLER RGNL (5N8)

RNP APCH.

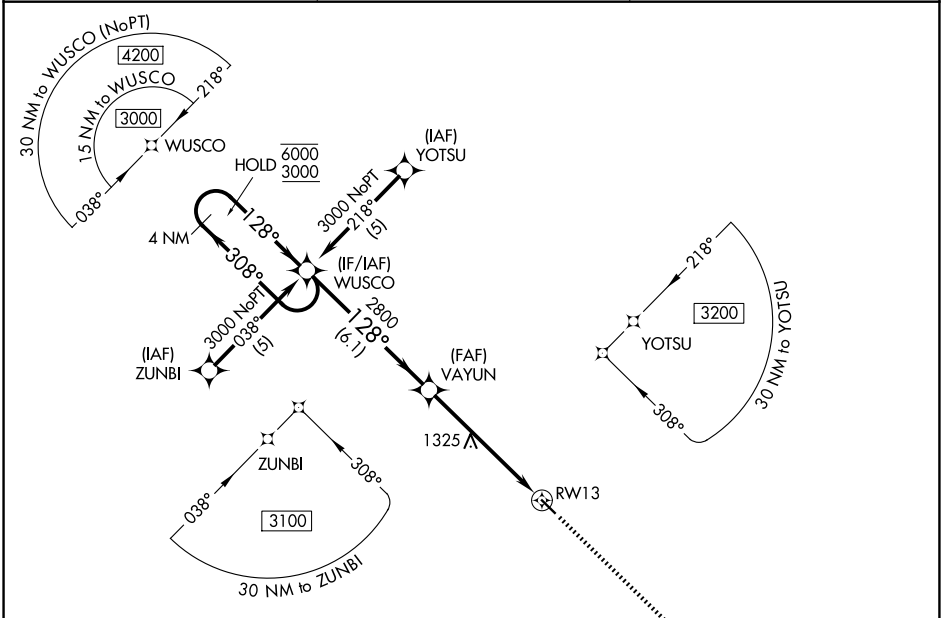
NA Rwy 13 helicopter visibility reduction below 3/4 SM NA. Use Fargo altimeter setting; when not received use Morehead altimeter setting and increase all MDA 20 feet.

MISSED APPROACH: Climb to 3000 direct JINPU and hold.

FAR ASOS
124.5 379.2

FARGO APP CON
120.4 377.15

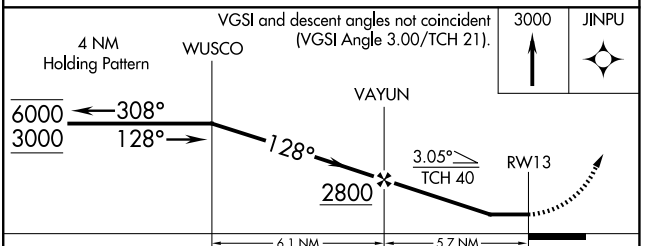
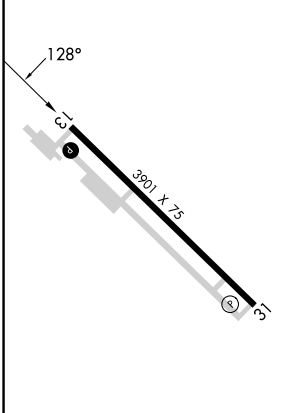
UNICOM
122.8 (CTAF)



NC-1, 14 MAY 2026 to 11 JUN 2026

NC-1, 14 MAY 2026 to 11 JUN 2026

ELEV 933	TDZE 933
----------	----------



REIL Rwy 31	MIRL Rwy 13-31			
CATEGORY	A	B	C	D
LNAV MDA	1620-1	687 (700-1)	1620-2 687 (700-2)	NA