

WAAS CH 70436 W03A	APP CRS 038°	Rwy Ldg TDZE Apt Elev	6001 3976 3979
----------------------------------------	------------------------	-----------------------------	-------------------------------------------

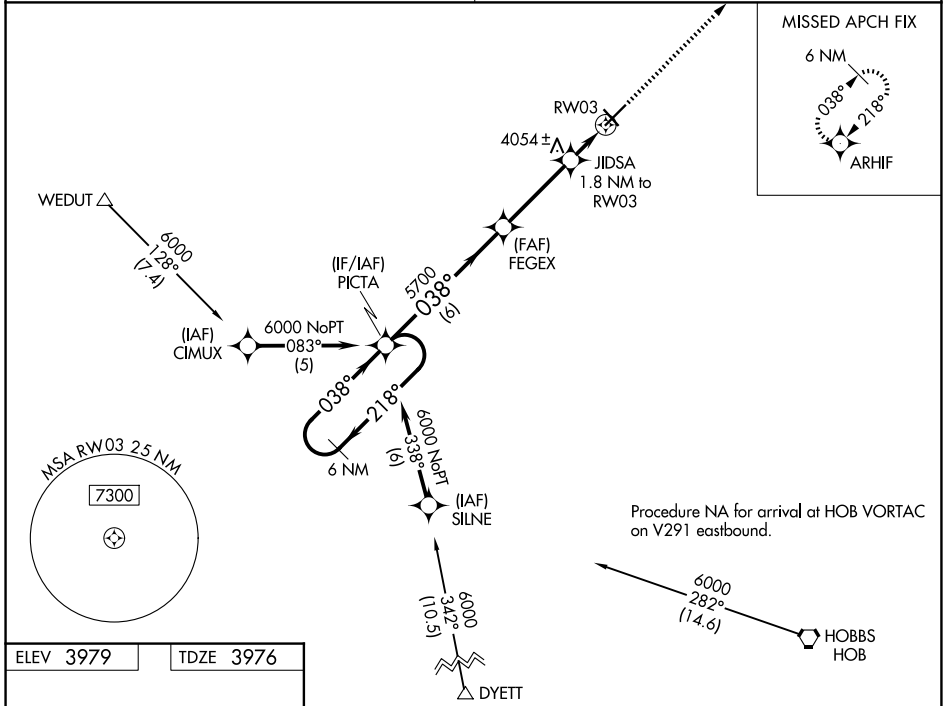
RNAV (GPS) RWY 3
LEA COUNTY/ZIP FRANKLIN MEML (E06)

Baro-VNAV NA. DME/DME RNP-0.3 NA. Use Hobbs altimeter setting; when not received, procedure NA. Helicopter visibility reduction below 1 SM NA. Night landing: Rwy 3, 12, 30 NA.

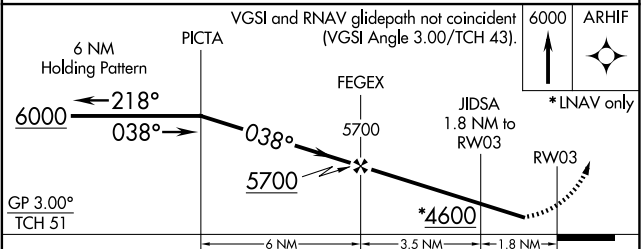
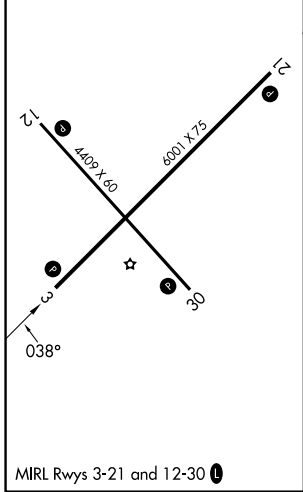
MISSED APPROACH: Climb to 6000 direct ARHIF and hold.

FORT WORTH CENTER 133.1 298.95

UNICOM 122.8 (CTAF) 0



ELEV 3979	TDZE 3976
-----------	-----------



CATEGORY	A	B	C	D
LPV DA	4314-1½	338 (400-1½)		NA
LNAV/VNAV DA	4314-1½	338 (400-1½)		NA
LNAV MDA	4400-1	424 (500-1)	4400-1¼ 424 (500-1¼)	NA
CIRCLING	4480-1	501 (600-1)	4720-2¼ 741 (800-2¼)	NA

SW-1, 14 MAY 2026 to 11 JUN 2026

SW-1, 14 MAY 2026 to 11 JUN 2026