

APP CRS Rwy Ldg **2827**  
 141° TDZE **1116**  
 Apt Elev **1116**

# RNAV (GPS) RWY 14

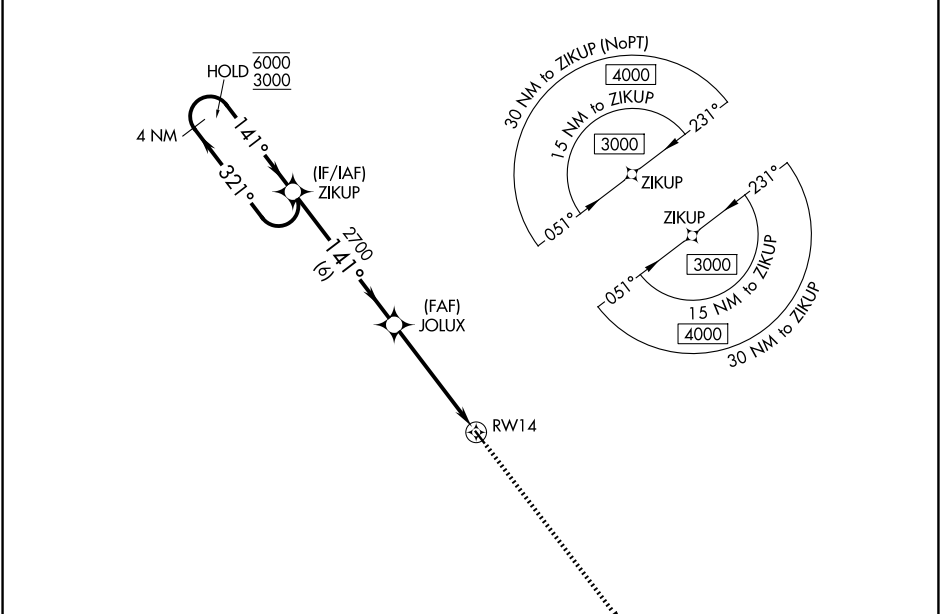
WINTERSET MUNI (3Y3)

RNP APCH.

**NA** Circling NA for Cat B southwest of Rwy 14-32. Procedure NA at night.  
**NA** Rwy 14 helicopter visibility reduction below 1 SM NA. Use Osceola altimeter setting.

MISSED APPROACH: Climb to 3000 direct JUNUG and hold.

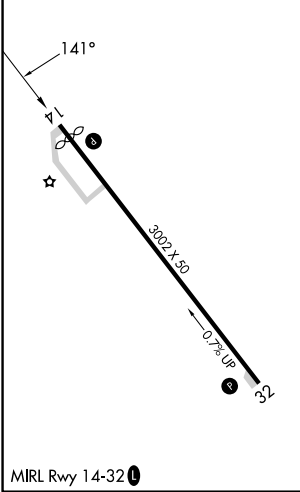
I75 AWOS-3 **120.975**      DES MOINES APP CON **123.9 360.7**      UNICOM **122.7 (CTAF) 0**



NC-3, 14 MAY 2026 to 11 JUN 2026

NC-3, 14 MAY 2026 to 11 JUN 2026

ELEV 1116      TDZE 1116



MIRL Rwy 14-32 0

VGSI and descent angles not coincident 3000 JUNUG  
 (VGSI Angle 3.00/TCH 32).

CATEGORY	A	B	C	D
LNAV MDA	1640-1	524 (600-1)		NA
CIRCLING	1640-1 524 (600-1)	1700-1 584 (600-1)		NA