

WAAS CH <b>56440</b> <b>W06A</b>	APP CRS <b>058°</b>	Rwy Ldg TDZE <b>574</b> Apt Elev <b>575</b>	<b>3396</b>
--	------------------------	---	-------------

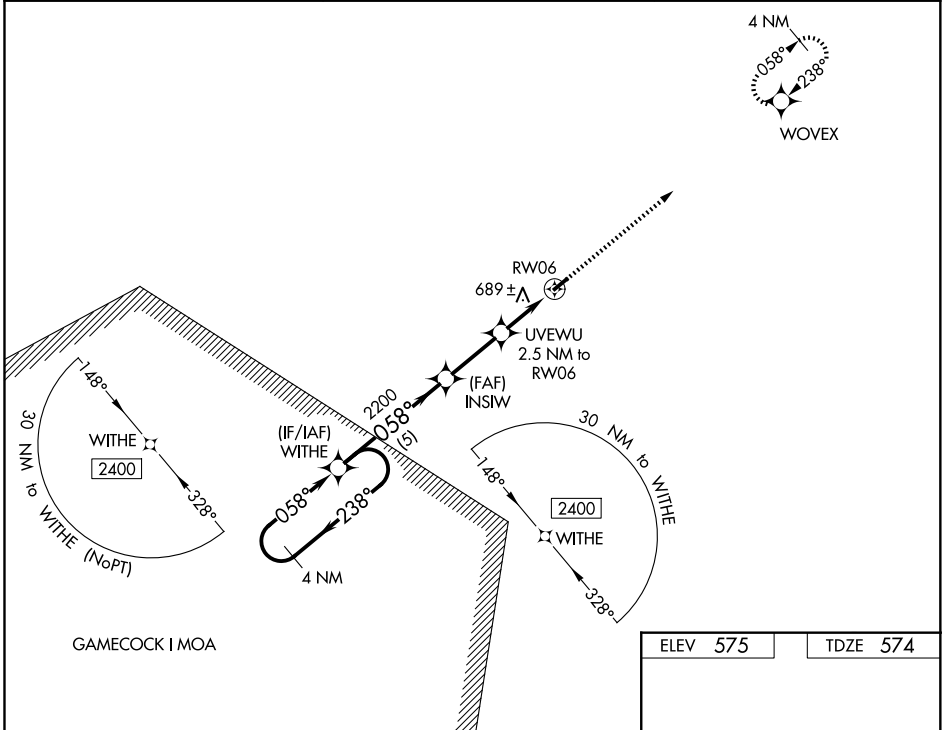
# RNAV (GPS) RWY 6

PAGELAND (PYG)

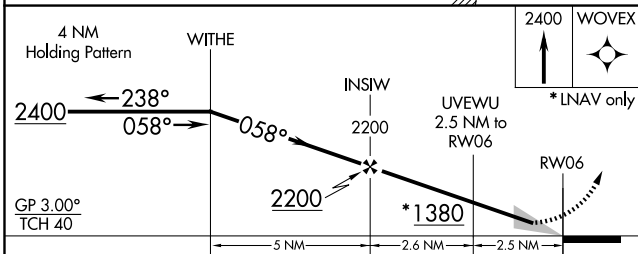
**Baro-VNAV NA. DME/DME RNP-0.3 NA. Use Charlotte/Monroe Exec altimeter setting. When Charlotte/Monroe Exec altimeter not received, use Charlotte/Douglas Intl altimeter setting and increase LPV DA to 943 feet and all visibilities 1/8 SM. Increase LNAV/VNAV DA to 1139 feet and all visibilities 1/4 SM. Increase all MDA 60 feet.**

**NA MISSED APPROACH:** Climb to 2400 direct WOVEX and hold.

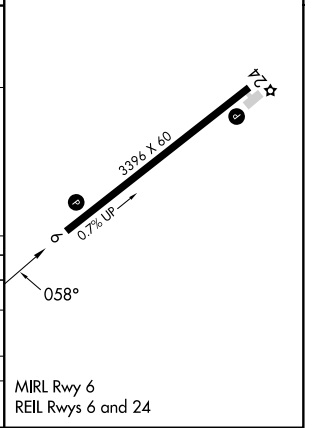
EQY ASOS <b>135.775</b>	CHARLOTTE APP CON <b>120.05 307.8</b>	(CTAF) <b>122.9</b>
----------------------------	--	------------------------



ELEV <b>575</b>	TDZE <b>574</b>
-----------------	-----------------



CATEGORY	A	B	C	D
LPV DA	889-1 1/8	315 (400-1 1/8)		NA
LNAV/VNAV DA	1085-1 1/8	511 (600-1 1/8)		NA
LNAV MDA	1020-1	446 (500-1)		NA
CIRCLING	1100-1 1/8	525 (600-1 1/8)		NA



MIRL Rwy 6  
REIL Rws 6 and 24

SE-2, 14 MAY 2026 to 11 JUN 2026

SE-2, 14 MAY 2026 to 11 JUN 2026