

WAAS CH <b>82636</b> <b>W17A</b>	APP CRS <b>174°</b>	Rwy Ldg TDZE <b>1436</b> Apt Elev <b>1437</b>
--	------------------------	---

# RNAV (GPS) RWY 17

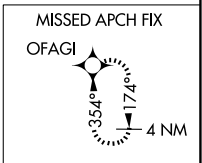
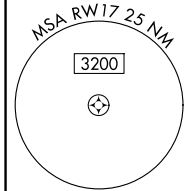
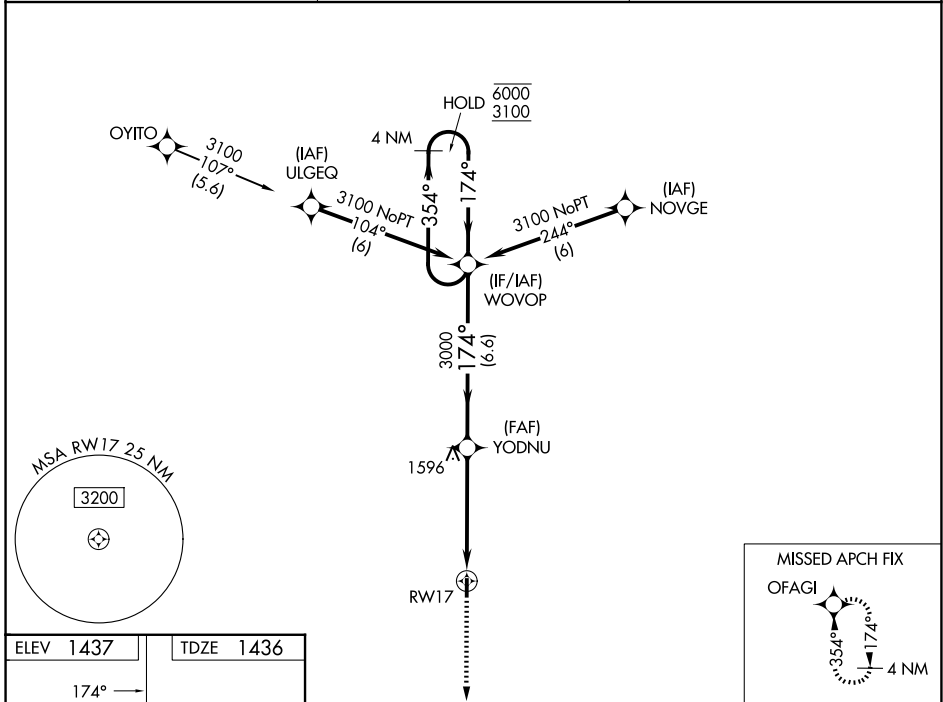
WASHINGTON COUNTY VETERAN'S MEML (K38)

RNP APCH - GPS.

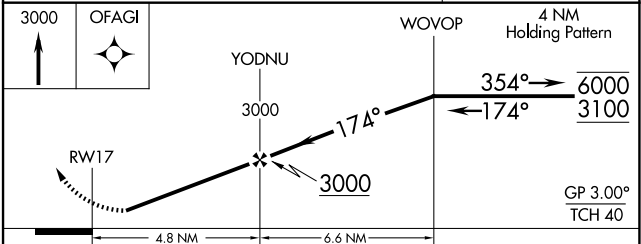
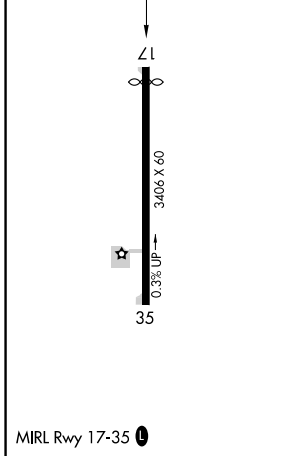
▼ Rwy 17 helicopter visibility reduction below 1 SM NA.  
 ▲ NA Baro-VNAV NA. Use Concordia altimeter setting.  
 Straight-in and Circling Rwy 17 NA at night.

MISSED APPROACH: Climb to 3000 direct OFAGI and hold.

CNK ASOS <b>123.825</b>	KANSAS CITY CENTER <b>127.35 257.975</b>	CTAF <b>122.90</b>
----------------------------	---	-----------------------



ELEV <b>1437</b>	TDZE <b>1436</b>
------------------	------------------



CATEGORY	A	B	C	D
LPV DA	1763-1 327 (400-1)			NA
LNAV/VNAV DA	1763-1 327 (400-1)			NA
LNAV MDA	1920-1	484 (500-1)	1920-1 3/8 484 (500-1 3/8)	NA
CIRCLING	1980-1	543 (600-1)	1980-1 1/2 543 (600-1 1/2)	NA

NC-2, 14 MAY 2026 to 11 JUN 2026

NC-2, 14 MAY 2026 to 11 JUN 2026