

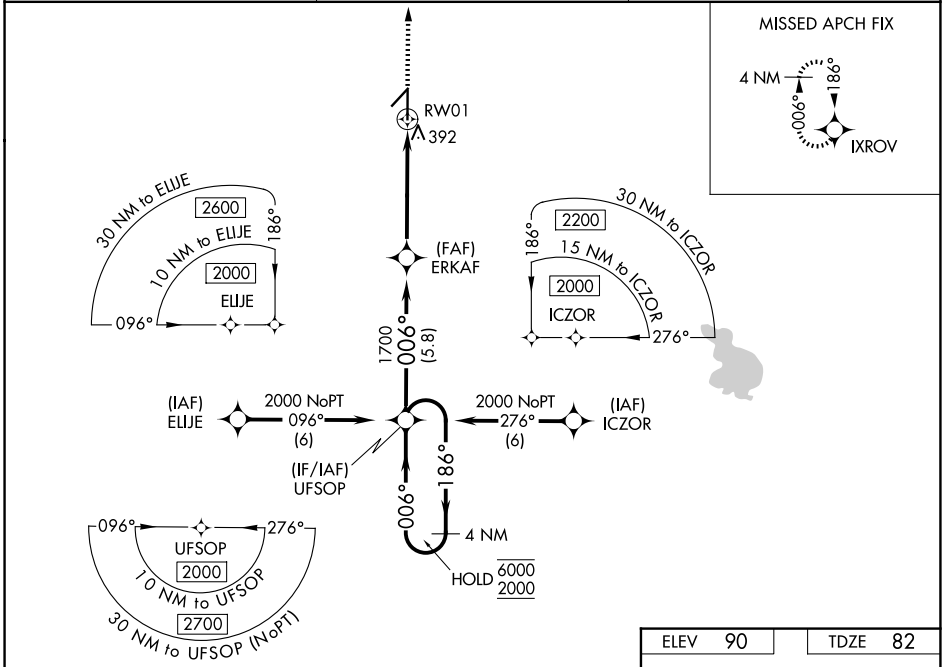
WAAS CH <b>69636</b> <b>W01A</b>	APP CRS <b>006°</b>	Rwy Ldg TDZE Apt Elev	<b>6201</b> <b>82</b> <b>90</b>
--	------------------------	-----------------------------	---------------------------------------

# RNAV (GPS) RWY 1

ZEPHYRHILLS MUNI (ZPH)

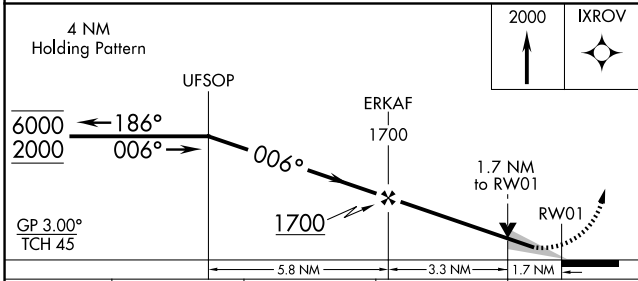
RNP APCH - GPS	MISSED APPROACH: Climb to 2000 direct IXROV and hold.
<p>▼ For uncompensated Baro-VNAV systems, LNAV/VNAV NA below -15°C or above 54°C.</p> <p>▲</p>	

AWOS-3PT <b>118.975</b>	TAMPA APP CON <b>119.9 290.3</b>	UNICOM <b>123.075</b> (CTAF) <b>1</b>
----------------------------	-------------------------------------	--



SE-3, 14 MAY 2026 to 11 JUN 2026

SE-3, 14 MAY 2026 to 11 JUN 2026



ELEV 90	TDZE 82
---------	---------

The RWY 1 diagram shows a runway with a width of 8001 x 100 feet and a length of 6201 x 100 feet. It includes various lights and markers, such as the MIRS (Middle Inboard Row) lights, HIRLS (High Intensity Runway Lights), and REILS (Runway End Identifier Lights). The chart also shows the 006° heading and the 19° heading.

CATEGORY	A	B	C	D
LPV DA		332-7/8	250 (300-7/8)	
LNAV/VNAV DA		553-13/8	471 (500-13/8)	
LNAV MDA	660-1	578 (600-1)	660-15/8	578 (600-15/8)
CIRCLING	700-1	610 (700-1)	700-13/4 610 (700-13/4)	780-21/4 690 (700-21/4)