

WAAS CH 45538 W23A	APP CRS 229°	Rwy Ldg TDZE 88 Apt Elev 90	5001
--	------------------------	---	-------------

RNAV (GPS) RWY 23

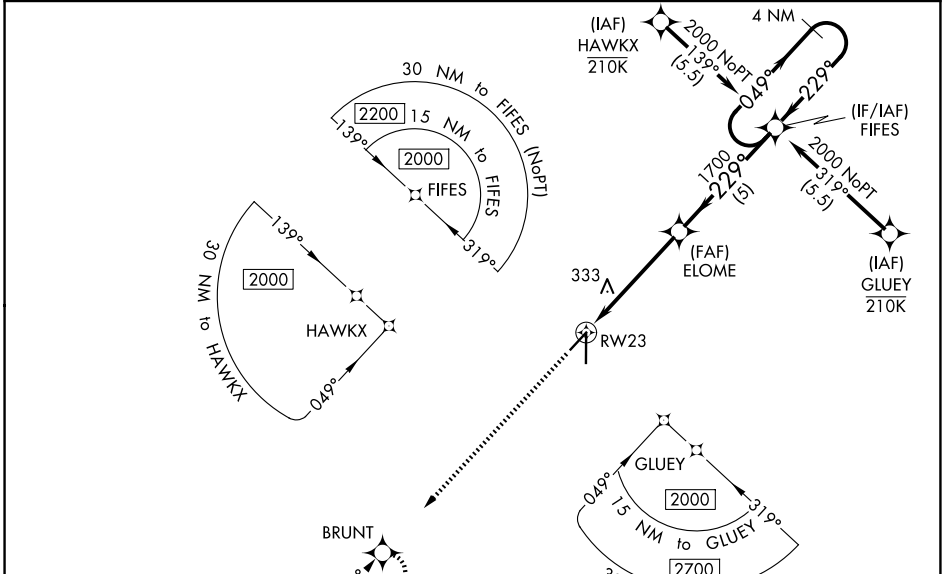
ZEPHYRHILLS MUNI (ZPH)

RNP APCH.

⚠ Baro-VNAV and VDP NA when using Tampa Exec altimeter setting. For uncompensated Baro-VNAV systems, LNAV/VNAV NA below -15°C or above 54°C. Rwy 23 helicopter visibility reduction below 3/4 SM NA. When local altimeter setting not received, use Tampa Exec altimeter setting and increase all DA 48 feet and all MDA 60 feet. Increase LPV and LNAV/VNAV all Cats, LNAV and Circling Cat C/D visibility 1/4 mile.

MISSED APPROACH:
Climb to 2000 direct BRUNT and hold.

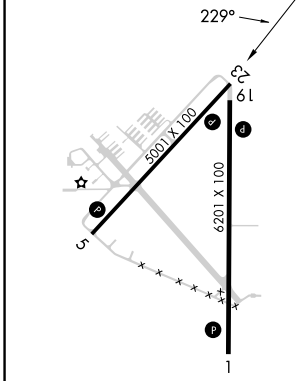
AWOS-3PT 118.975	TAMPA APP CON 119.9 290.3	UNICOM 123.075 (CTAF) 📻
----------------------------	-------------------------------------	--



SE-3, 14 MAY 2026 to 11 JUN 2026

SE-3, 14 MAY 2026 to 11 JUN 2026

ELEV 90	TDZE 88
----------------	----------------



2000 BRUNT VGSI and RNAV glidepath not coincident (VGSI Angle 3.61/TCH 41). 4 NM Holding Pattern

*LNAV only

RW23 1.5 NM 3.4 NM 5 NM

ELOME 1700 229°

FIFES 049° 2000

GP 3.00° TCH 53

CATEGORY	A	B	C	D
LPV DA		377-1	289 (300-1)	
LNAV/VNAV DA		409-1	321 (400-1)	
LNAV MDA	600-1	512 (600-1)	600-1 3/8	512 (600-1 3/8)
CIRCLING	740-1	650 (700-1)	740-1 3/4 650 (700-1 3/4)	740-2 650 (700-2)

MIRL Rwy 5-23 **📻**
HIRL Rwy 1-19 **📻**
REIL Rwy 1 and 19 **📻**