

RNAV (GPS)-A

HEBER VALLEY (HCR)

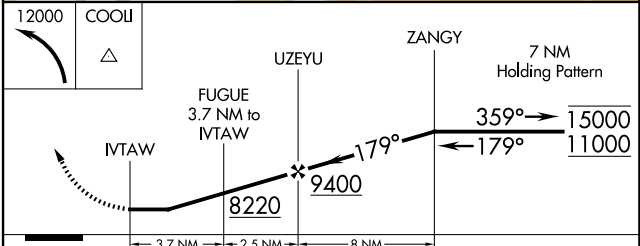
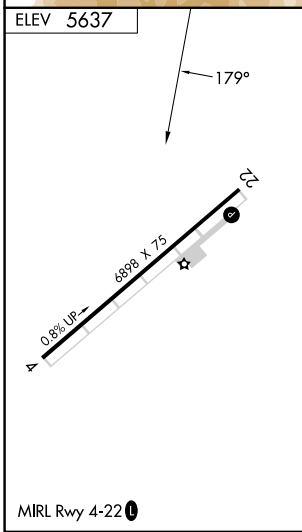
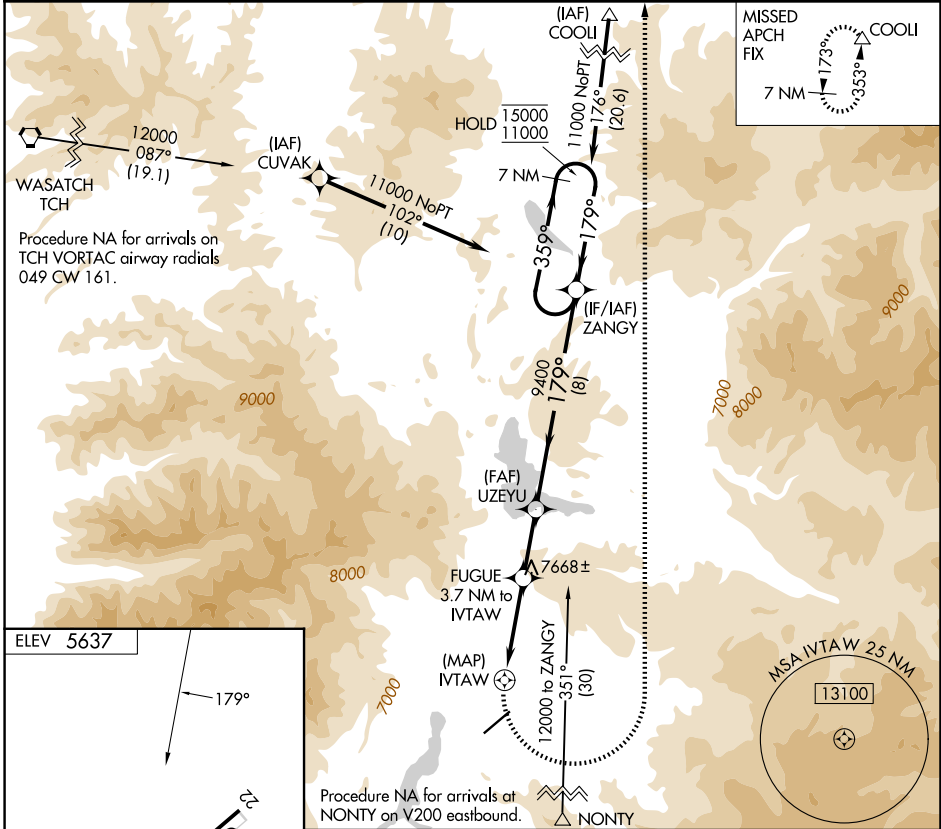
APP CRS 179°	Rwy Ldg TDZE Apt Elev	N/A N/A 5637
------------------------	-----------------------------	---

RNP APCH.

⚠ Circling NA south of Rwy 4-22.
⚠ Circling Rwy 4 NA at night.
⚠ -1.6°C

MISSED APPROACH: (Do not exceed 210K until turn completion)
 Climbing left turn to 12000 direct COOLI and hold.

AWOS-3PT 124.825	SALT LAKE CITY CENTER 119.95 377.15	UNICOM 122.8 (CTAF)
----------------------------	---	-------------------------------



CATEGORY	A	B	C	D
CIRCLING	8020-1½	2383 (2400-1½)	8020-3 2383 (2400-3)	NA

SW-4, 14 MAY 2026 to 11 JUN 2026