

LOC/DME I-HWG 110.7 Chan 44	APP CRS 120°	Rwy Ldg 4199 5000	12L 12R TDZE 2189 2205	Apt Elev 2205 2205
---	------------------------	-----------------------------	-------------------------------------	------------------------------

ILS or LOC RWY 12L

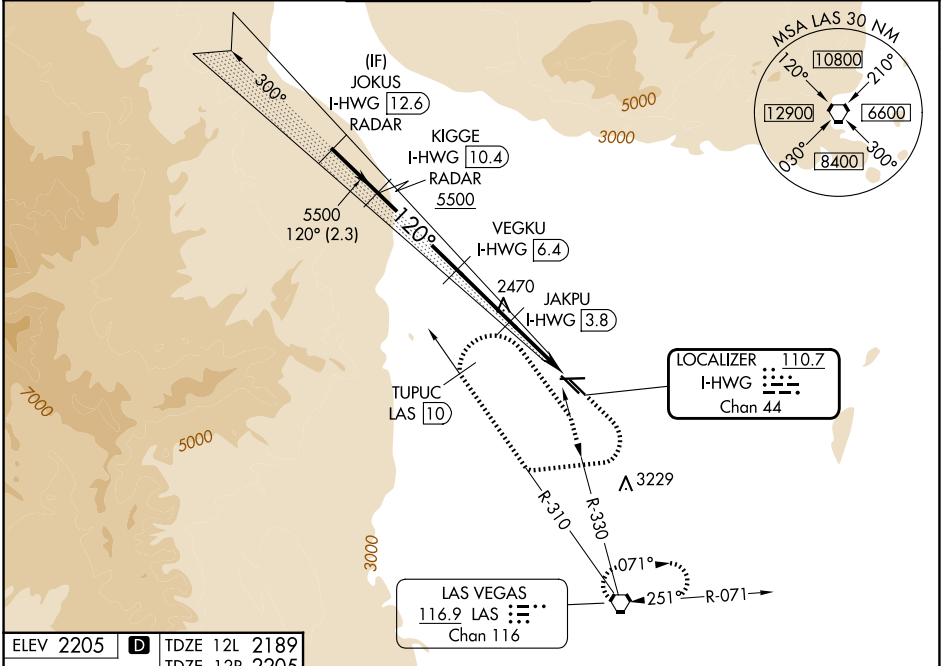
NORTH LAS VEGAS (VGT)

RADAR and DME required.

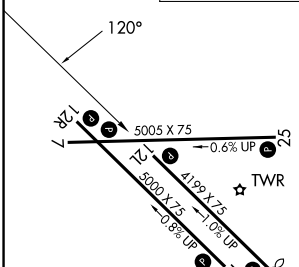
⚠ Rwy 12L helicopter visibility reduction below 3/4 SM NA.

MISSED APPROACH: Climb to 2660 then climbing right turn heading 250° to 6000, intercept LAS VORTAC R-310 outbound to TUPUC/LAS 10 DME then right turn on LAS VORTAC R-330 inbound to LAS VORTAC and hold.

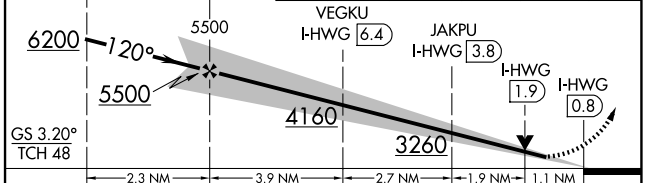
ATIS 118.05	LAS VEGAS APP CON 119.4 360.85	NORTH LAS VEGAS TOWER* 125.7 (CTAF) 0 360.75	GND CON 121.7	UNICOM 122.95
-----------------------	--	--	-------------------------	-------------------------



ELEV 2205	D	TDZE 12L 2189
		TDZE 12R 2205



JOKUS I-HWG 12.6 RADAR	KIGGE I-HWG 10.4 RADAR	2660	6000	LAS R-310 outbound	TUPUC LAS 10	LAS R-330 inbound	LAS
------------------------	------------------------	------	------	--------------------	--------------	-------------------	-----



	A	B	C	D
S-ILS 12L	2456-1	267 (300-1)		NA
S-LOC 12L	2620-1	431 (500-1)		NA
SIDESTEP 12R	2720-1 3/8	515 (600-1 3/8)		NA
CIRCLING	2720-1	515 (600-1)		NA

REIL all rwys **Ⓛ**
MIRL all rwys **Ⓛ**

FAF to MAP 9.6 NM					
Knots	60	90	120	150	180
Min:Sec	9:36	6:24	4:48	3:50	3:12

SW-4, 14 MAY 2026 to 11 JUN 2026

SW-4, 14 MAY 2026 to 11 JUN 2026