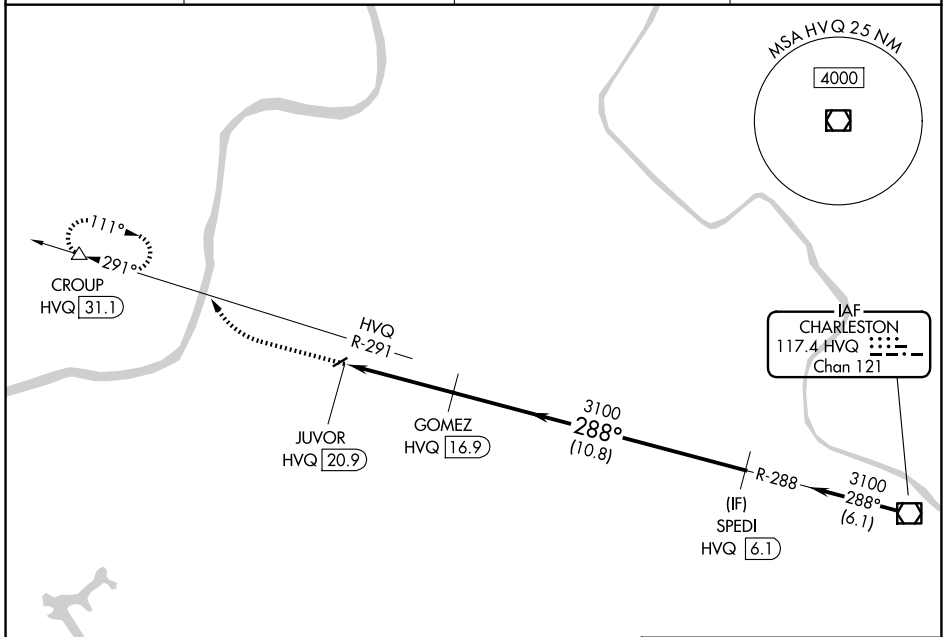


HVQ VOR/DME 117.4 Chan 121	APP CRS 288°	Rwy Ldg TDZE Apt Elev N/A N/A 572
--	------------------------	---

VOR-A
ONA AIRPARK (12V)

DME required.	MISSED APPROACH: Climbing right turn to 3200 on HVQ VOR/DME R-291 to CROUP/HVQ VOR/DME 31.1 and hold.
⚠ NA Circling NA northwest of Rwy 7-25. Procedure NA at night. Use Huntington altimeter setting; when not received, use Point Pleasant altimeter setting.	

HTS ASOS 125.2	CHARLESTON APP CON 124.1 269.125 (E)	HUNTINGTON APP CON 119.75 270.1 (W)	UNICOM 122.8 (CTAF)
--------------------------	--	---	-------------------------------



NE-4, 14 MAY 2026 to 11 JUN 2026

NE-4, 14 MAY 2026 to 11 JUN 2026

ELEV 572

