

WAAS CH 77742 W18A	APP CRS 182°	Rwy Ldg TDZE Apt Elev	4300 1599 1607
--	------------------------	-----------------------------	---

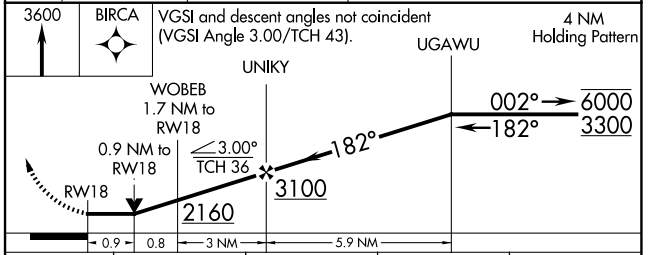
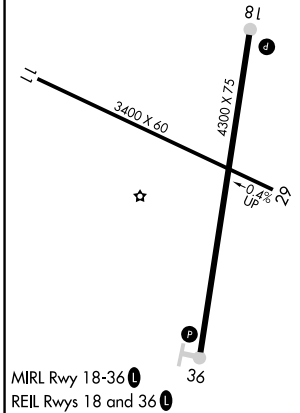
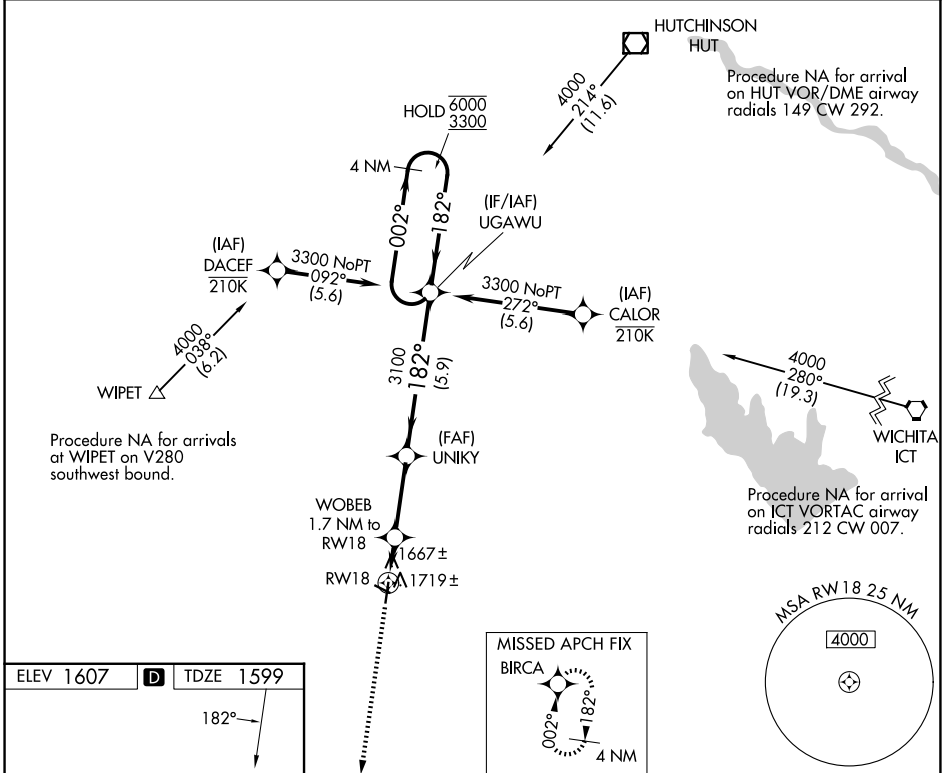
RNAV (GPS) RWY 18

KINGMAN/CLYDE CESSNA FLD (9K8)

RNP APCH. MISSED APPROACH: Climb to 3600 direct BIRCA and hold.

Rwy 18 helicopter visibility reduction below 3/4 SM NA. Circling Rwy 11, 29 NA at night.

AWOS-3PT 119.325	WICHITA APP CON 125.5 306.2	UNICOM 122.8 (CTAF) 0
----------------------------	---------------------------------------	--



CATEGORY	A	B	C	D
LP MDA	1920-1 321 (400-1)			NA
LNAV MDA	1980-1 381 (400-1)	1980-1½ 381 (400-1½)		NA
CIRCLING	2040-1 433 (500-1)	2060-1 453 (500-1)	2160-1½ 553 (600-1½)	NA

NC-2, 14 MAY 2026 to 11 JUN 2026

NC-2, 14 MAY 2026 to 11 JUN 2026