

WAAS CH <b>50437</b> <b>W17A</b>	APP CRS <b>178°</b>	Rwy Ldg TDZE <b>570</b> Apt Elev <b>572</b>
--	------------------------	---

# RNAV (GPS) RWY 17

STAN STAMPER MUNI (HHW)

RNP APCH.

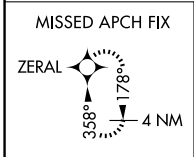
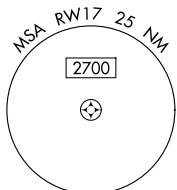
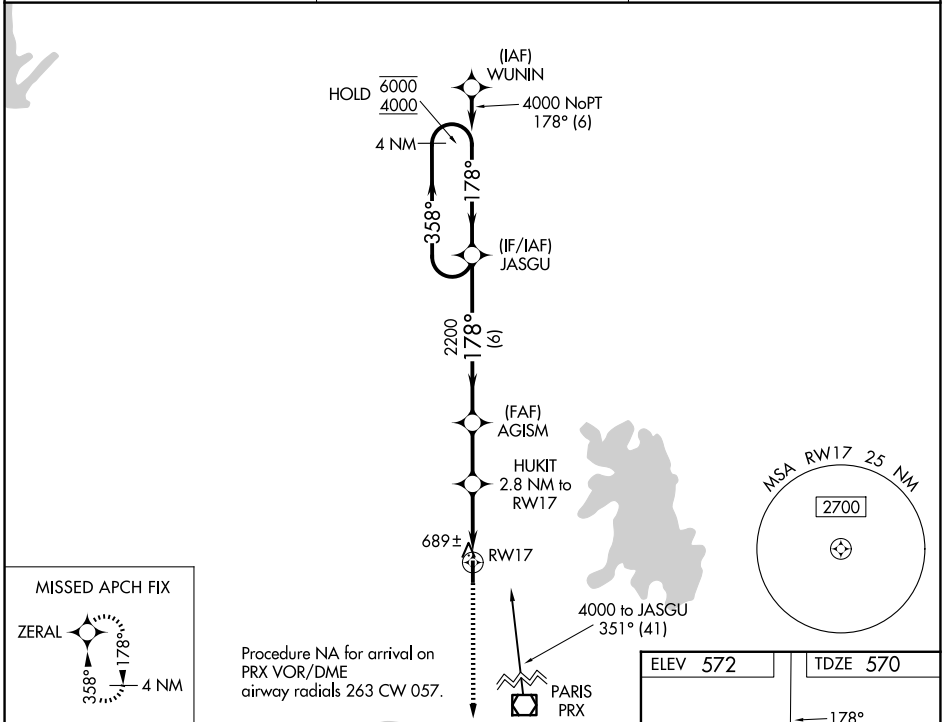
**▼** Circling Rwy 35 NA at night. Rwy 17 helicopter visibility reduction below 3/4 SM NA.  
**▲** For uncompensated Baro-VNAV systems, LNAV/VNAV NA below -16°C or above 54°C.

MISSED APPROACH: Climb to 2500 direct ZERAL and hold.

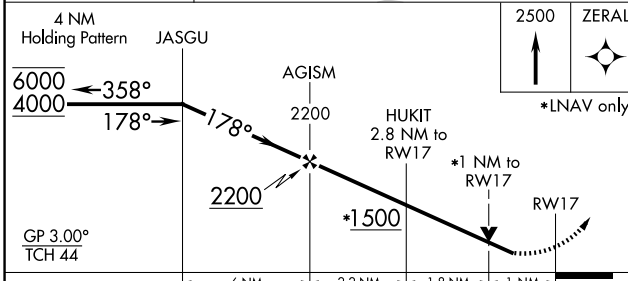
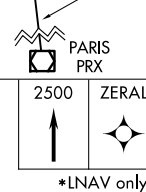
AWOS-3  
**119.025**

FORT WORTH CENTER  
**124.875 370.95**

UNICOM  
**122.8 (CTAF) ①**



Procedure NA for arrival on PRX VOR/DME airway radials 263 CW 057.



ELEV 572	TDZE 570
<p>MIRL Rwy 17-35 ① REIL Rwy 17, 35 ①</p>	

CATEGORY	A	B	C	D
LPV DA		820-1	250 (300-1)	
LNAV/VNAV DA		870-1	300 (300-1)	
LNAV MDA		940-1	370 (400-1)	
CIRCLING	1220-1	648 (700-1)	1340-2 1/4 768 (800-2 1/4)	1340-2 1/2 768 (800-2 1/2)

SC-1, 14 MAY 2026 to 11 JUN 2026

SC-1, 14 MAY 2026 to 11 JUN 2026