

WAAS CH 86639 W35A	APP CRS 358°	Rwy Ldg TDZE Apt Elev	4007 572 572
--	------------------------	-----------------------------	---

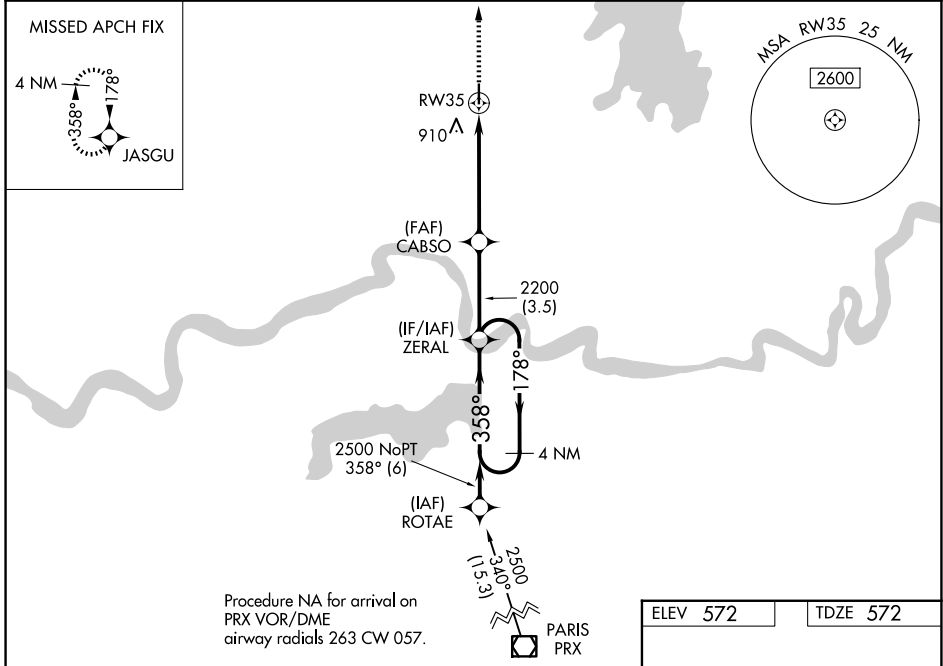
RNAV (GPS) RWY 35

STAN STAMPER MUNI (HHW)

▼ For uncompensated Baro-VNAV systems, LNAV/VNAV NA below -16°C (4°F) or above 54°C (130°F). Rwy 35 helicopter visibility reduction below 1 SM NA. DME/DME RNP-0.3 NA. Straight-in Rwy 35 and Circling Rwy 35 NA at night.

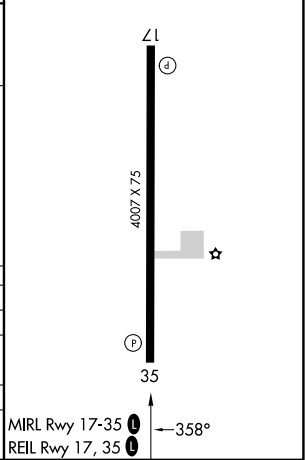
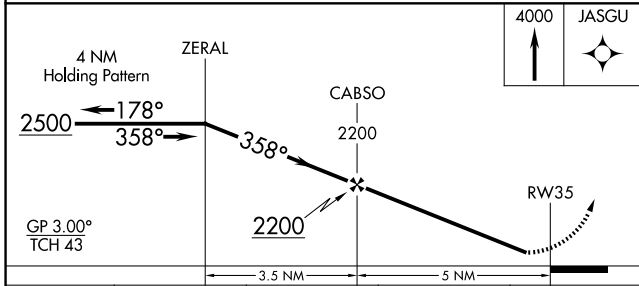
MISSED APPROACH: Climb to 4000 direct JASGU and hold, continue climb-in-hold to 4000.

AWOS-3 119.025	FORT WORTH CENTER 124.875 370.95	UNICOM 122.8 (CTAF) 0
--------------------------	--	---------------------------------



Procedure NA for arrival on PRX VOR/DME airway radials 263 CW 057.

ELEV 572	TDZE 572
----------	----------



CATEGORY	A	B	C	D
LPV DA		822-1	250 (300-1)	
LNAV/VNAV DA		1071-1 $\frac{3}{8}$	499 (500-1 $\frac{3}{8}$)	
LNAV MDA	1020-1	448 (500-1)	1020-1 $\frac{3}{8}$	448 (500-1 $\frac{3}{8}$)
CIRCLING	1220-1	648 (700-1)	1340-2 $\frac{1}{4}$ 768 (800-2 $\frac{1}{4}$)	1340-2 $\frac{1}{2}$ 768 (800-2 $\frac{1}{2}$)

SC-1, 14 MAY 2026 to 11 JUN 2026

SC-1, 14 MAY 2026 to 11 JUN 2026