

| | | | |
|--|------------------------|-----------------------------|---|
| WAAS CH 99644 W18A | APP CRS 180° | Rwy Ldg TDZE Apt Elev | 6001 1316 1316 |
|--|------------------------|-----------------------------|---|

RNAV (GPS) RWY 18

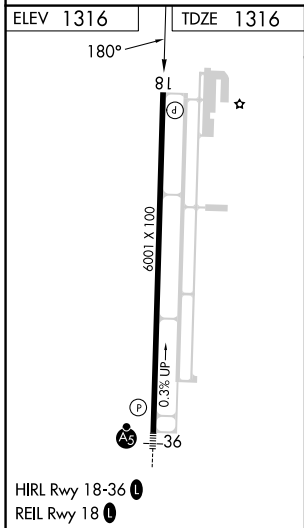
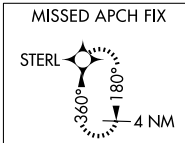
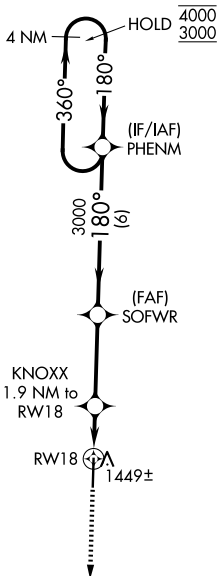
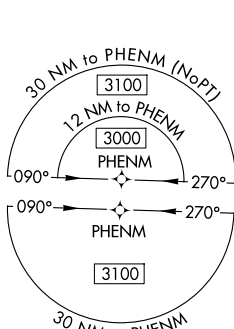
MONETT RGNL (HFJ)

RNP APCH - GPS.

⚠ Baro-VNAV and VDP NA when using Joplin altimeter setting. For uncompensated Baro-VNAV systems, LNAV/VNAV NA below -17°C or above 54°C. When local altimeter setting not received, use Joplin altimeter setting; increase LPV DA to 1678 feet and all visibilities ¼ SM; increase LNAV/VNAV DA to 1742 feet and all visibilities ⅜ SM; increase all MDAs 120 feet and LNAV visibility Cat C/D ¼ SM, and Circling visibility Cat C/D ½ SM.

MISSED APPROACH: Climb to 3100 direct STERL and hold.

| | | | |
|--------------------------|--|---------------------------|--|
| AWOS-3 118.275 | SPRINGFIELD APP CON 124.95 318.2 | CLNC DEL 121.85 | UNICOM 123.075 (CTAF) 📻 |
|--------------------------|--|---------------------------|--|



| 3100 STERL | SOFWR | PHENM | 4 NM Holding Pattern | |
|----------------------|-----------------------|-----------------------|----------------------------|-------------------------|
| KNOXX 1.9 NM to RW18 | 3000 | 180° | 360° → 4000 ← 180° 3000 | |
| 1.1 NM to RW18 | 1960 | 3000 | GP 3.00° TCH 43 | |
| 1.1 NM | 0.8 | 3.3 NM | 6 NM | |
| CATEGORY | A | B | C | D |
| LPV DA | DA | 1566-¾ | 250 (300-¾) | |
| LNAV/VNAV DA | DA | 1630-⅞ | 314 (400-⅞) | |
| LNAV MDA | 1700-1 | 384 (400-1) | 1700-1½ | 384 (400-1½) |
| CIRCLING | 1760-1 444 (500-1) | 1900-1 584 (600-1) | 1900-1½ 584 (600-1½) | 2060-2½ 744 (800-2½) |

NC-3, 14 MAY 2026 to 11 JUN 2026

NC-3, 14 MAY 2026 to 11 JUN 2026