


WAAS CH <b>58244</b> <b>W36A</b>	APP CRS <b>360°</b>	Rwy Ldg TDZE Apt Elev	<b>6001</b> <b>1301</b> <b>1316</b>
--	------------------------	-----------------------------	---

# RNAV (GPS) RWY 36


MONETT RGNL (HFJ)

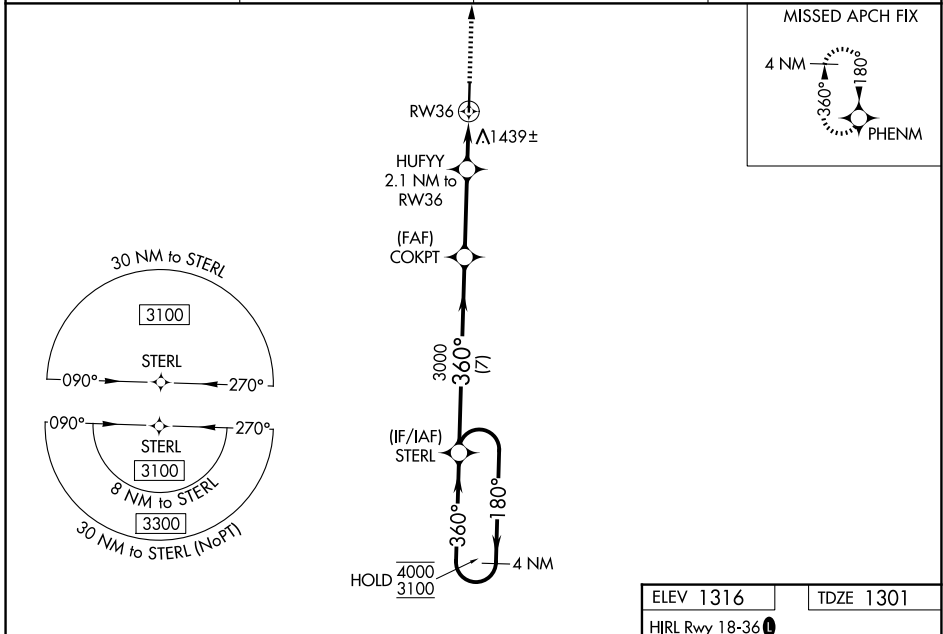
RNP APCH - GPS.

**⚠** Baro-VNAV and VDP NA when using Joplin altimeter setting. For uncompensated Baro-VNAV systems, LNAV/VNAV NA below -17°C or above 54°C. When local altimeter setting not received, use Joplin altimeter setting: increase LPV DA to 1613 feet; increase LNAV/VNAV DA to 1862 feet and all visibilities 3/8 SM; increase all MDAs 120 feet and LNAV visibility Cats C and D 3/8 SM, and Circling visibility Cat C/D 1/2 SM.

MALSRL 

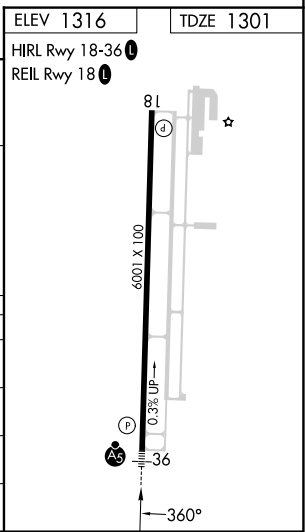
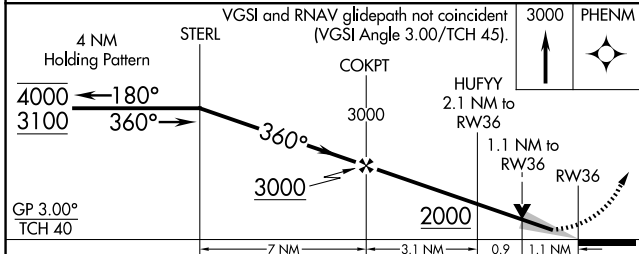
MISSED APPROACH: Climb to 3000 direct PHENM and hold.

AWOS-3 <b>118.275</b>	SPRINGFIELD APP CON <b>124.95 318.2</b>	CLNC DEL <b>121.85</b>	UNICOM <b>123.075 (CTAF)</b> 
--------------------------	--	---------------------------	---



NC-3, 14 MAY 2026 to 11 JUN 2026

NC-3, 14 MAY 2026 to 11 JUN 2026



CATEGORY	A	B	C	D
LPV DA		1501-1/2	200 (200-1/2)	
LNAV/VNAV DA		1750-7/8	449 (500-7/8)	
LNAV MDA	1700-1/2	399 (400-1/2)	1700-5/8	399 (400-5/8)
CIRCLING	1760-1 444 (500-1)	1900-1 584 (600-1)	1900-1 1/2 584 (600-1 1/2)	2060-2 1/2 744 (800-2 1/2)