

WAAS CH 70519 W33A	APP CRS 332°	Rwy Idg TDZE Apt Elev	5006 131 132
---------------------------------	------------------------	-----------------------------	---

RNAV (GPS) RWY 33

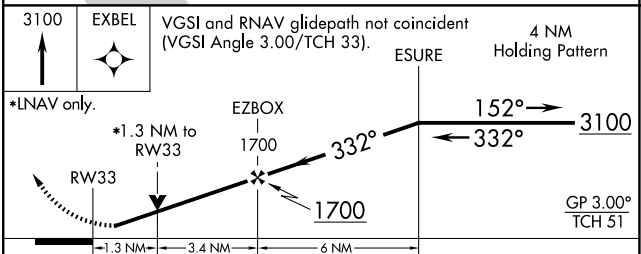
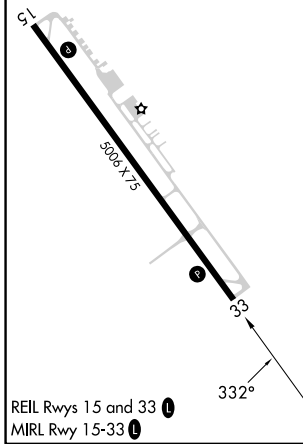
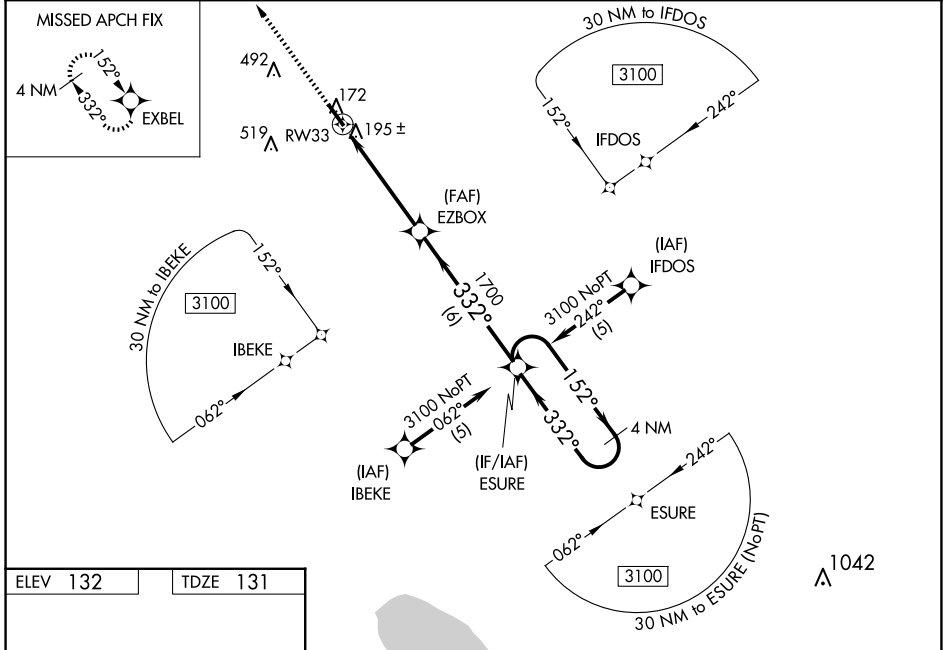
CURTIS L BROWN JR FLD (EYF)

RNP APCH.

⚠ Rwy 33 helicopter visibility reduction below 3/4 SM NA. When local altimeter setting not received, use Fayetteville, NC altimeter setting; increase LPV DA to 453 feet, LNAV/VNAV DA to 537 feet, and all MDAs 80 feet, and increase LPV and LNAV/VNAV all Cats visibility 1/4 SM, LNAV Cats C and D and Circling Cats C and D visibility 1/4 SM. Baro-VNAV and VDP NA when using Fayetteville, NC altimeter setting. For uncompensated Baro-VNAV systems, LNAV/VNAV NA below -1.5°C (5°F) or above 48°C (118°F).

MISSED APPROACH: Climb to 3100 direct EXBEL and hold.

AWOS-3P 119.475	FAYETTEVILLE APP CON 133.0 290.25	UNICOM 122.8 (CTAF)
---------------------------	---	-------------------------------



CATEGORY	A	B	C	D
LPV DA		381-3/4	250 (300-3/4)	
LNAV/VNAV DA		465-1 1/4	334 (400-1 1/4)	
LNAV MDA	580-1	449 (500-1)	580-1 1/4 449 (500-1 1/4)	580-1 1/2 449 (500-1 1/2)
CIRCLING	580-1 448 (500-1)	660-1 528 (600-1)	880-2 1/4 748 (800-2 1/4)	880-2 1/2 748 (800-2 1/2)

SE-2, 14 MAY 2026 to 11 JUN 2026

SE-2, 14 MAY 2026 to 11 JUN 2026