

WAAS CH 72629 W18A	APP CRS 182°	Rwy Idg TDZE 1305 Apt Elev 1305	5012
--	------------------------	---	-------------

RNAV (GPS) RWY 18

HAMILTON MUNI (MNZ)

RNP APCH-GPS.

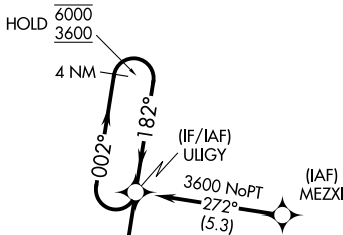
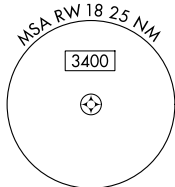
▼ Rwy 18 helicopter visibility reduction below 3/4 SM NA.
For uncompensated Baro-VNAV systems, LNAV/VNAV NA below -17°C or above 54°C.

MISSED APPROACH: Climb to 3100 direct USXEL and hold.

AWOS-3PT
118.525

GRAY APP CON
120.075 323.15

UNICOM
122.7 (CTAF) 0

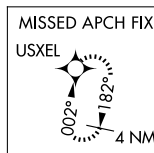
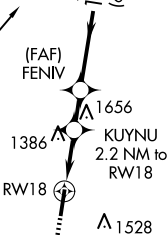


Procedure NA for arrivals at BUILT on V161 southbound.

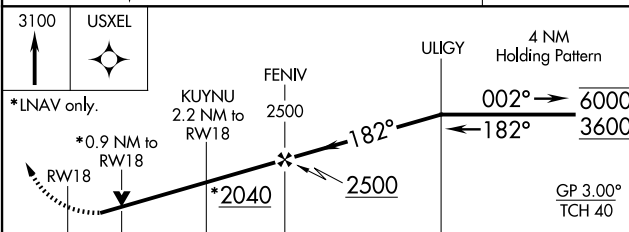
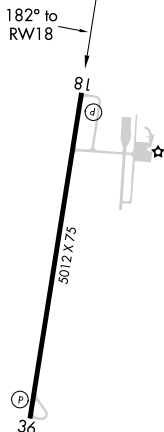
Procedure NA for arrivals at SONET on V358 northeast bound.

1760 Δ

BUILT Δ



ELEV 1305 TDZE 1305



CATEGORY	A	B	C	D
LPV DA		1555-1	250 (300-1)	NA
LNAV/VNAV DA		1555-1	250 (300-1)	NA
LNAV MDA		1640-1	335 (400-1)	NA
CIRCLING	1680-1 375 (400-1)	1840-1 535 (600-1)	1960-1 3/4 655 (700-1 3/4)	NA

MIRL Rwy 18-36 0

SC-3, 14 MAY 2026 to 11 JUN 2026

SC-3, 14 MAY 2026 to 11 JUN 2026