

APP CRS 281°	Rwy Idg 3705
	TDZE 686
	Apt Elev 686

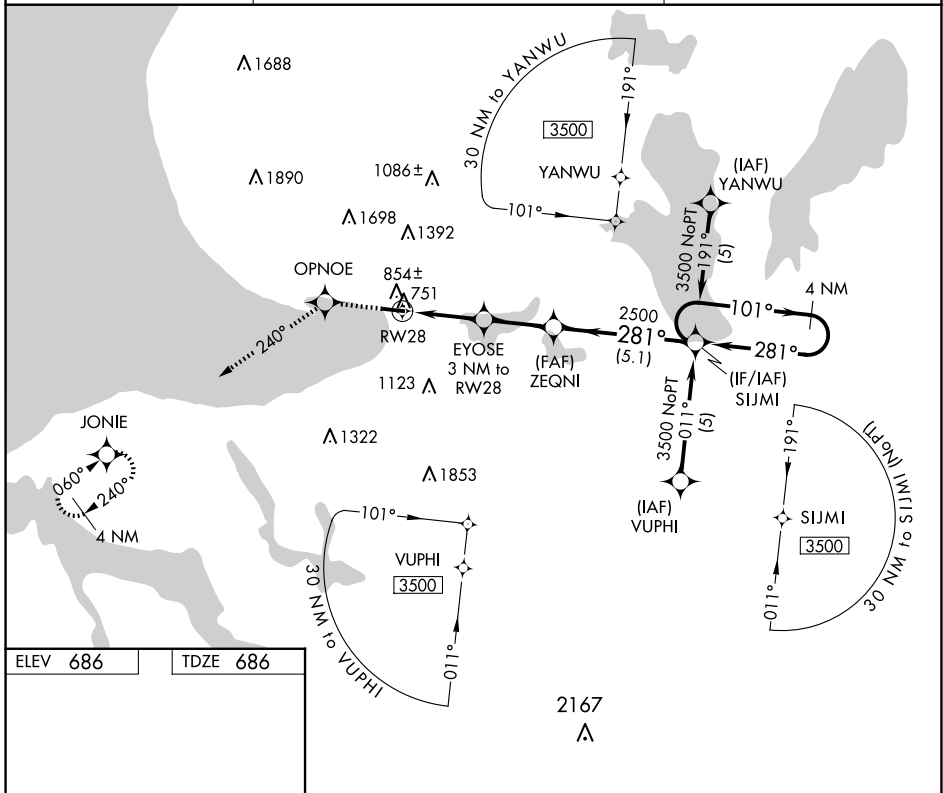
RNAV (GPS) RWY 28

HARBOR SPRINGS (MGN)

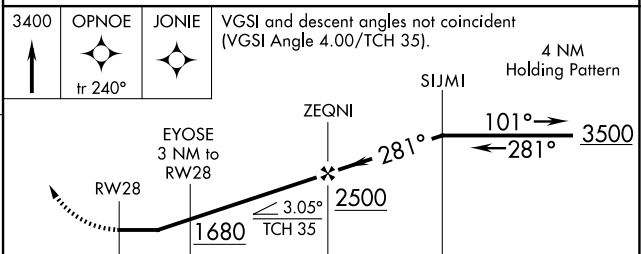
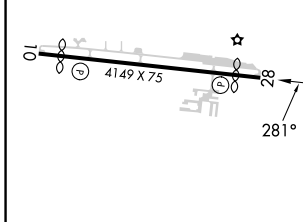
⚠ DME/DME RNP-0.3 NA. Helicopter visibility reduction below 1 SM NA. When local altimeter setting not received, use Pellsion altimeter setting and increase all MDAs 40 feet. Procedure NA at night.

MISSED APPROACH: Climb to 3400 direct OPNOE and via 240° track to JONIE and hold.

AWOS-3P 119.925	MINNEAPOLIS CENTER 134.6 354.05	UNICOM 122.8 (CTAF) 📻
---------------------------	---	--



ELEV 686	TDZE 686
----------	----------



CATEGORY	A	B	C	D
LNAV MDA	1120-1	434 (500-1)	NA	
CIRCLING	1380-1 694 (700-1)	1500-1¼ 814 (900-1¼)	NA	

EC-1, 14 MAY 2026 to 11 JUN 2026

EC-1, 14 MAY 2026 to 11 JUN 2026