

VOR/DME CPN <b>116.05</b> Chan <b>107 (Y)</b>	APP CRS <b>309°</b>	Rwy Idg TDZE Apt Elev <b>N/A</b> <b>5034</b>
-----------------------------------------------------	------------------------	-------------------------------------------------------

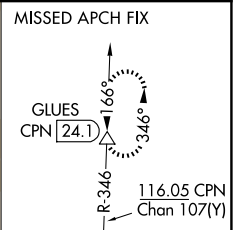
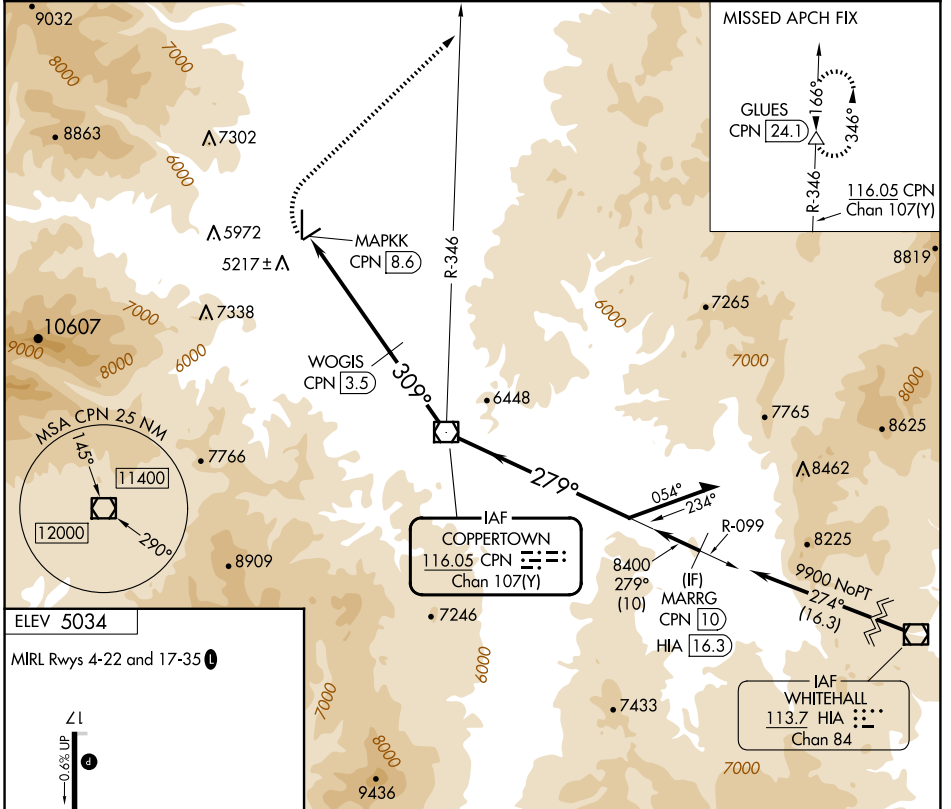
**VOR-A**  
BOWMAN FLD (3U3)

DME required.

▲ NA When local altimeter settings not received, use Butte altimeter setting and increase all MDAs 120 feet. Circling NA for Cats C and D west of Rwy 17-35.

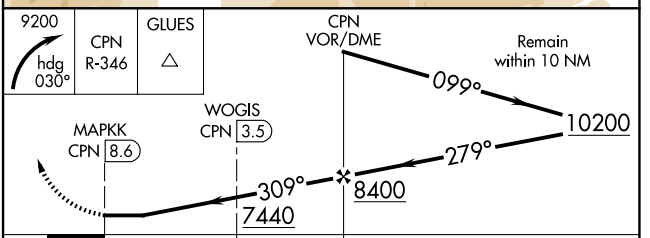
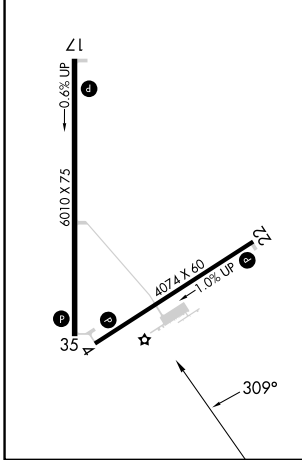
MISSED APPROACH: Climbing right turn to 9200 on heading 030° and on CPN VOR/DME R-346 to GLUES/CPN 24.1 DME and hold.

AWOS-3PT <b>124.175</b>	SALT LAKE CENTER <b>132.4 338.3</b>	UNICOM <b>122.8 (CTAF)</b>
----------------------------	----------------------------------------	-------------------------------



ELEV 5034

MIRL Rwy 4-22 and 17-35



CATEGORY	A	B	C	D
CIRCLING	6120-1¼ 1086 (1100-1¼)	6240-1½ 1206 (1300-1½)	6240-3	1206 (1300-3)

NW-1, 14 MAY 2026 to 11 JUN 2026

NW-1, 14 MAY 2026 to 11 JUN 2026