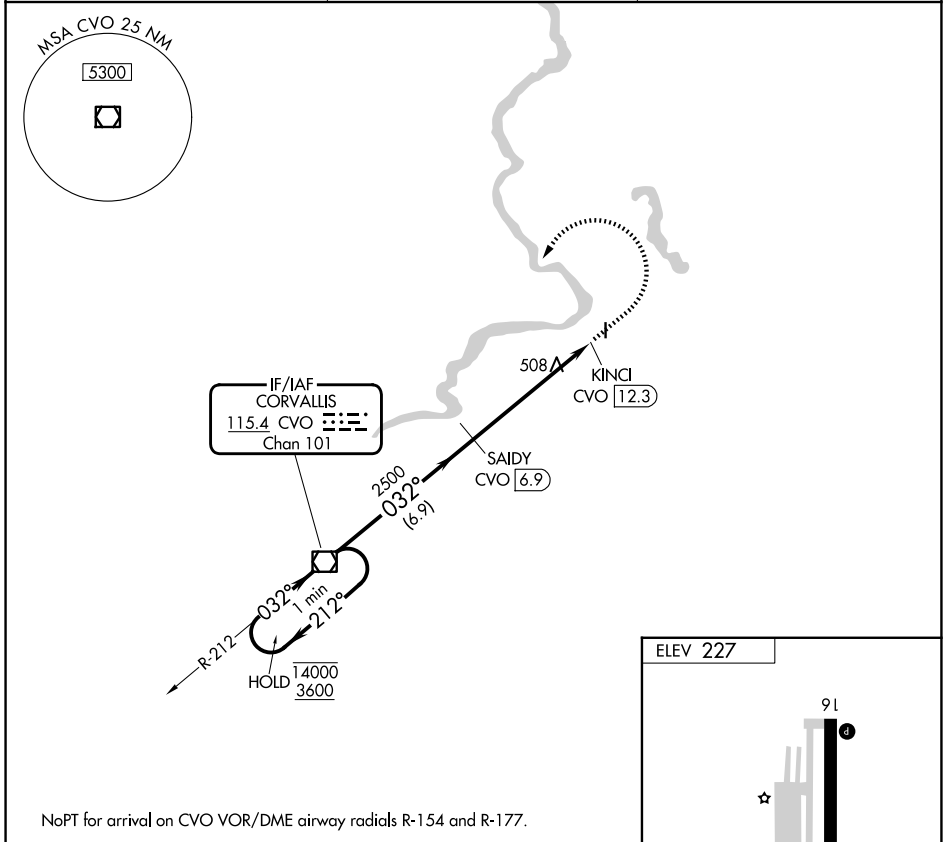


VOR/DME CVO <b>115.4</b> Chan <b>101</b>	APP CRS <b>032°</b>	Rwy Ldg TDZE Apt Elev	<b>N/A</b> <b>N/A</b> <b>227</b>
--	------------------------	--------------------------	--

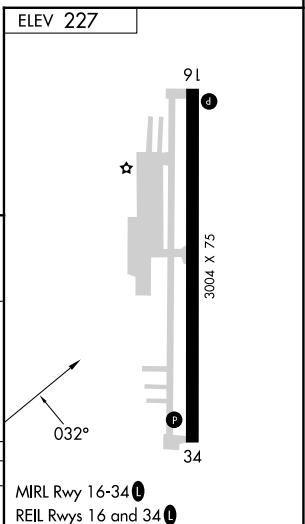
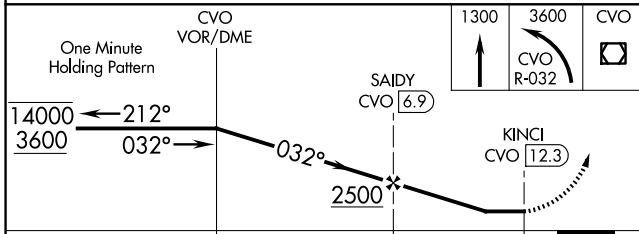
**VOR-A**  
ALBANY MUNI (S12)

DME required.	MISSED APPROACH: Climb to 1300 then climbing left turn to 3600 on CVO VOR/DME R-032 to CVO VOR/DME and hold.
▼ Rwy 16 and 34 helicopter visibility reduction below 1 SM NA. When ▲ NA local altimeter setting not received, use Corvallis altimeter setting.	

AWOS-3PT <b>119.925</b>	CASCADE APP CON * <b>127.5 348.7</b>	UNICOM <b>122.725 (CTAF) 0</b>
----------------------------	---	-----------------------------------



NoPT for arrival on CVO VOR/DME airway radials R-154 and R-177.



CATEGORY	A	B	C	D
CIRCLING	940-1 713 (800-1)	1020-1 793 (800-1)	NA	

NW-1, 14 MAY 2026 to 11 JUN 2026

NW-1, 14 MAY 2026 to 11 JUN 2026