

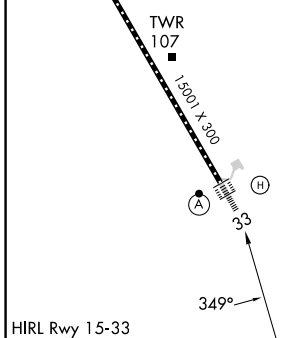
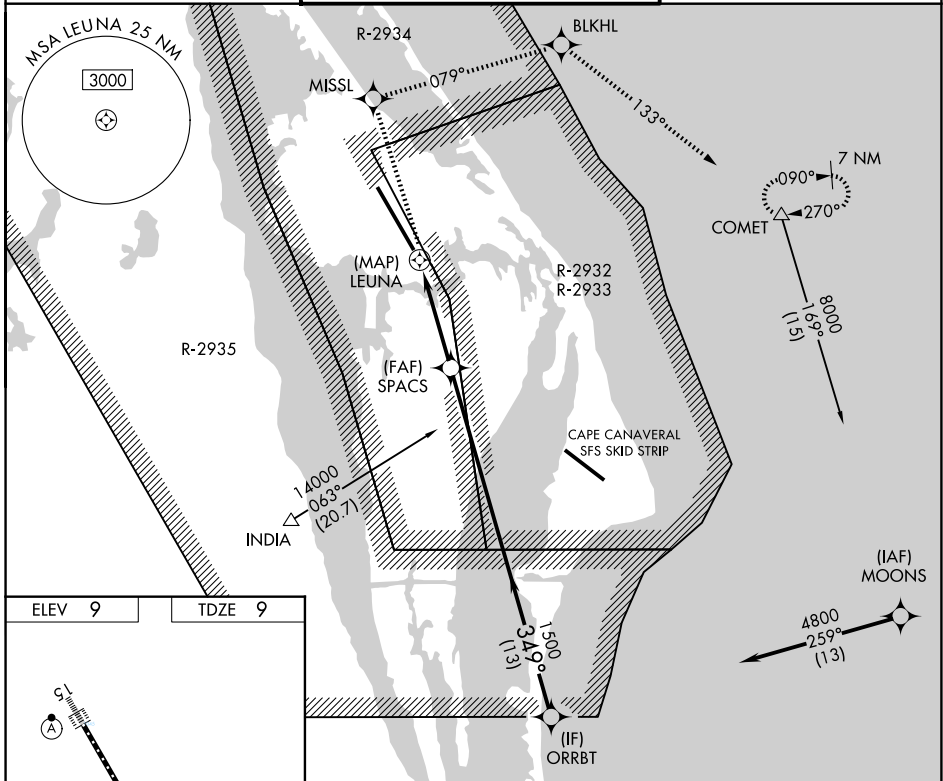
APP CRS	Rwy Ldg	15001
349°	TDZE	9
	Apt Elev	9

RNAV (GPS) RWY 33

SPACE FLORIDA LAUNCH AND LANDING FACILITY (TTS)

RNP APCH-GPS.	ALSF-2	MISSED APPROACH: Climb to 8000 direct MISSL and right turn on track 079° to BLKHL and on track 133° to COMET and hold, continue climb-in-hold to 8000.
Rwy 33 helicopter visibility reduction below 1 SM NA. Inop table does not apply. Use Melbourne altimeter setting.		

ORLANDO APP CON 134.95 281.425	NASA TOWER ★ 128.55 (CTAF) 284.0	GND CON 121.75
--	--	--------------------------



8000	MISSL	BLKHL	COMET	ORRBT
SPACS				4800
LEUNA				Procedure Turn NA
TCH 55				
1500				
349°				
0.5				4 NM
13 NM				
CATEGORY	A	B	C	D
LNAV MDA	540-1 530 (600-1)		540-1¼ 530 (600-1¼)	
CIRCLING	540-1 531 (600-1)		1020-3 1011 (1100-3)	

SE-3, 14 MAY 2026 to 11 JUN 2026

SE-3, 14 MAY 2026 to 11 JUN 2026