

APP CRS <b>142°</b>	Rwy Ldg TDZE Apt Elev	<b>3498</b> <b>1610</b> <b>1610</b>
------------------------	-----------------------------	---

# RNAV (GPS) RWY 14

MANITOWISH WATERS (D25)

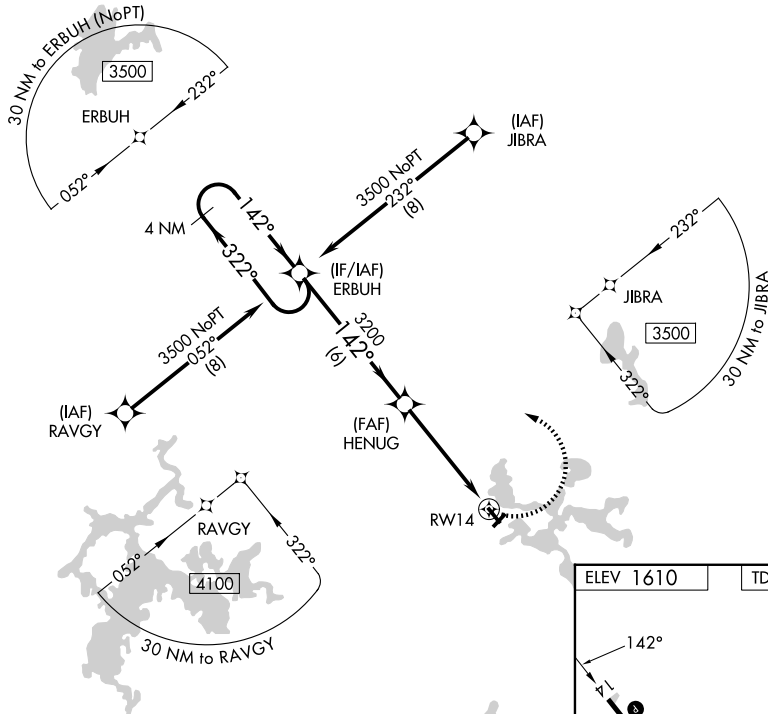
**▼** Circling NA to Rws 4 and 22. DME/DME RNP-0.3 NA. Procedure NA at night. Rwy 14 helicopter visibility reduction below 1 SM NA. When local altimeter setting not received, use Minocqua-Woodruff altimeter setting; increase all MDA 40 feet, increase LNAV Cat C visibility 1/8 mile and Circling Cat C visibility 1/4 mile.

**MISSED APPROACH:**  
Climbing left turn to 3500  
direct ERBUH and hold.

AWOS-3PT  
**118.175**

MINNEAPOLIS CENTER  
**133.65 281.5**

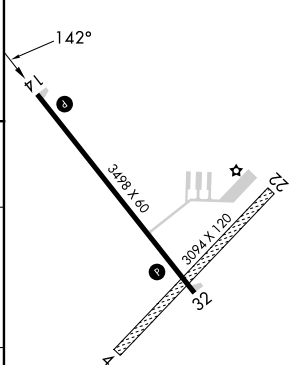
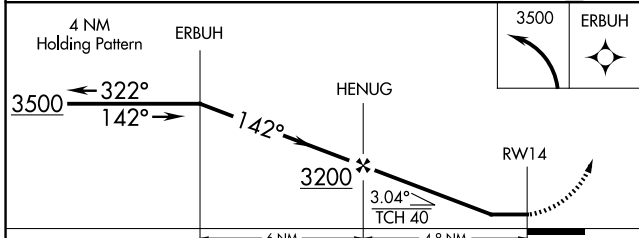
UNICOM  
**122.8 (CTAF) ①**



EC-3, 14 MAY 2026 to 11 JUN 2026

EC-3, 14 MAY 2026 to 11 JUN 2026

ELEV 1610	TDZE 1610
-----------	-----------



CATEGORY	A	B	C	D
LNAV MDA	2100-1	490 (500-1)	2100-1 3/8 490 (500-1 3/8)	NA
CIRCLING	2100-1	490 (500-1)	2340-2 730 (800-2)	NA

REIL Rws 14 and 32 ①  
MIRL Rwy 14-32 ①