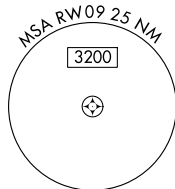


WAAS CH 40304 W09A	APP CRS 088°	Rwy Ldg TDZE Apt Elev	5074 894 895
--	------------------------	-----------------------------	---

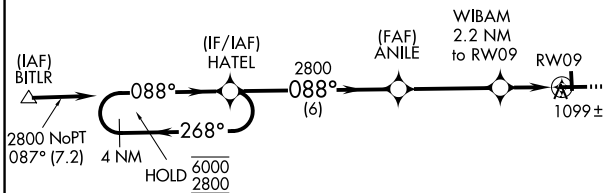
RNAV (GPS) RWY 9

MENOMONIE MUNI/SCORE FLD (LUM)

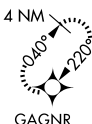
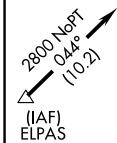
RNP APCH.		MISSED APPROACH: Climb to 1400 then climbing right turn to 2800 direct GAGNR and hold.
<p>∇ Circling Rwy 18, 36 NA at night. For uncompensated Baro-VNAV systems, LNAV/VNAV NA below -16°C or above 54°C.</p> <p>▲</p>		
AWOS-3PT 118.025	MINNEAPOLIS CENTER 125.3 335.6	UNICOM 123.075 (CTAF) 0



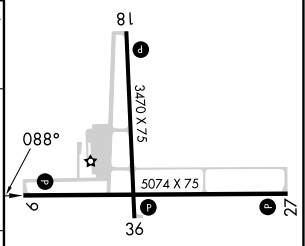
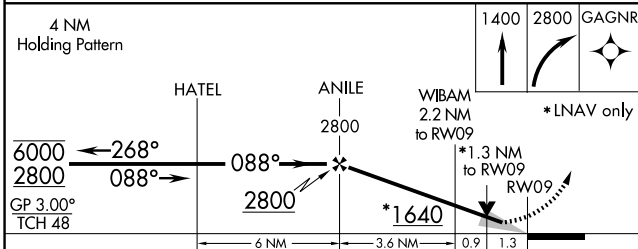
Procedure NA for arrivals at BITLR on V510 northwest bound and V413 westbound.



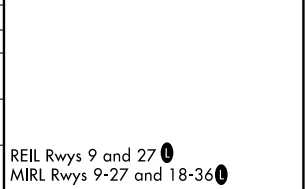
Procedure NA for arrivals at ELPAS on V26 southwest bound.



ELEV 895	TDZE 894
----------	----------



CATEGORY	A	B	C	D
LPV DA		1144-3/4	250 (300-1)	NA
LNAV/VNAV DA		1423-1 1/2	529 (600-1 1/2)	NA
LNAV MDA	1360-1	466 (500-1)	1360-1 3/8 466 (500-1 3/8)	NA
CIRCLING	1420-1 525 (600-1)	1800-1 1/4 905 (1000-1 1/4)	1820-2 3/4 925 (1000-1 3/4)	NA



EC-3, 14 MAY 2026 to 11 JUN 2026

EC-3, 14 MAY 2026 to 11 JUN 2026