

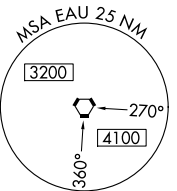
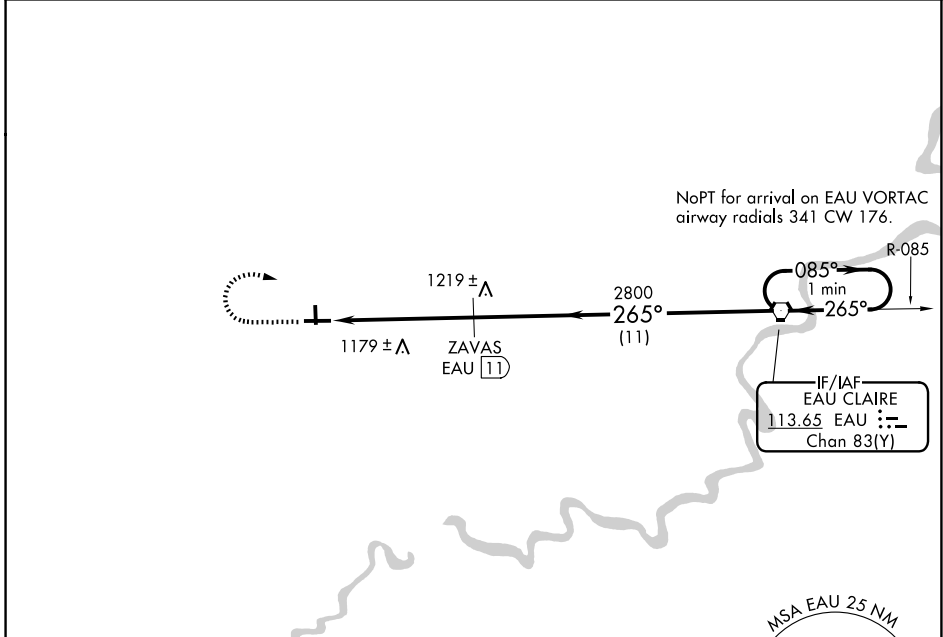
VORTAC EAU 113.65 Chan 83 (Y)	APP CRS 265°	Rwy Ldg TDZE Apt Elev	5074 894 895
---	------------------------	-----------------------------	---

VOR/DME RWY 27
MENOMONIE MUNI/SCORE FLD (LUM)

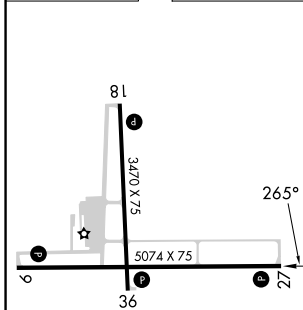
⚠ When local altimeter setting not received, use Chippewa Valley Rgnl altimeter setting and increase all MDA 60 feet, increase Circling Cat B and C visibility ¼ SM. VDP NA when using Chippewa Valley Rgnl altimeter setting. Rwy 27 helicopter visibility reduction below ¾ SM NA.

MISSED APPROACH: Climb to 2000 then climbing right turn to 2800 direct EAU VORTAC and hold.

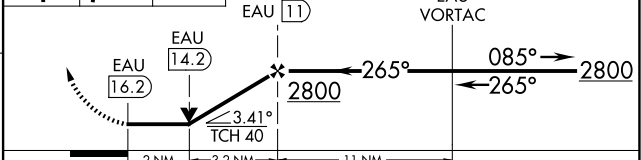
AWOS-3PT 118.025	MINNEAPOLIS CENTER 125.3 335.6	UNICOM 123.075 (CTAF) 0
----------------------------	--	--



ELEV 895	TDZE 894
----------	----------



2000 2800 EAU VGSI and descent angles not coincident (VGSI Angle 3.00/TCH 40). One Minute Holding Pattern



CATEGORY	A	B	C	D
S-27	1560-1	666 (700-1)	1560-1¾ 666 (700-1¾)	NA
CIRCLING	1560-1 665 (700-1)	1800-1¼ 905 (1000-1¼)	1820-2¾ 925 (1000-2¾)	NA

REIL Rwys 9 and 27 **0**
MIRL Rwys 9-27 and 18-36 **0**
MENOMONIE, WISCONSIN
Amdt 1B 09SEP21

44°54'N-91°52'W

MENOMONIE MUNI/SCORE FLD (LUM)
VOR/DME RWY 27

EC-3, 14 MAY 2026 to 11 JUN 2026

EC-3, 14 MAY 2026 to 11 JUN 2026