

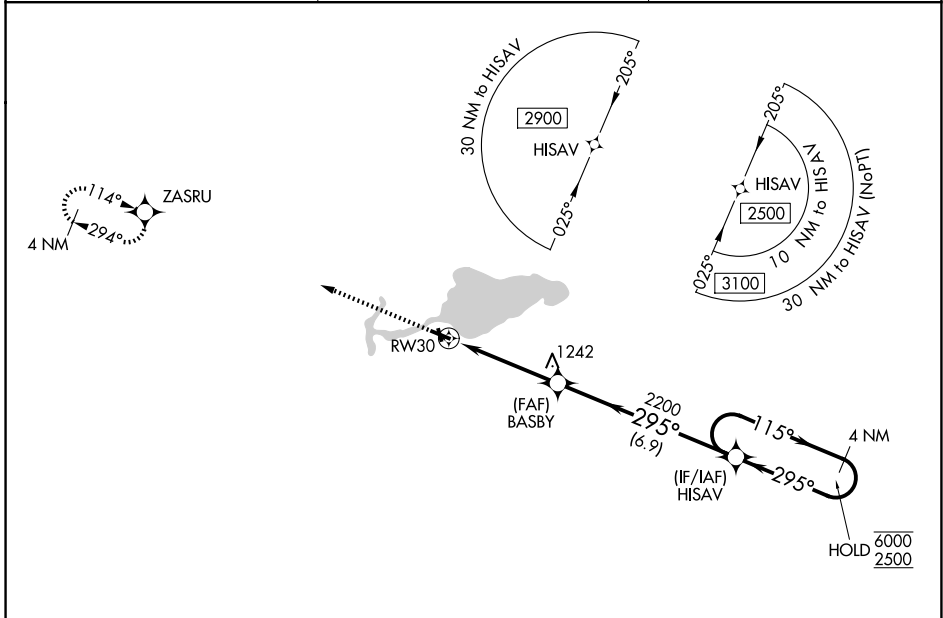
WAAS CH 77729 W30A	APP CRS 295°	Rwy Ldg TDZE Apt Elev	3901 811 813
----------------------------------------	------------------------	-----------------------------	-----------------------------------------

RNAV (GPS) RWY 30

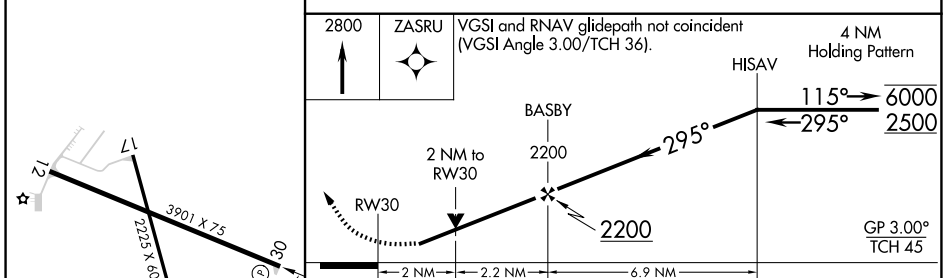
SHAWANO MUNI (E/ZS)

RNP APCH - GPS.	MISSED APPROACH: Climb to 2800 direct ZASRU and hold.
<p>▼ Rwy 30 helicopter visibility reduction below ¼ SM NA. For uncompensated Baro-VNAV systems, LNAV/VNAV NA below -16°C or above 54°C. Circling to Rwy 12, 17, 35 NA at night.</p> <p>▲</p>	

AWOS-3 118.65	GREEN BAY APP CON ★ 119.4 338.2	UNICOM 122.8 (CTAF) ①
-------------------------	-------------------------------------------	---------------------------------



ELEV 813	TDZE 811
----------	----------



CATEGORY	A	B	C	D
LPV DA	1103-1 292 (300-1)			
LNAV/VNAV DA	1457-1 7/8 646 (700-1 7/8)			
LNAV MDA	1500-1	689 (700-1)	1500-2	689 (700-2)
CIRCLING	1500-1	687 (700-1)	1680-2 1/2 867 (900-2 1/2)	1680-2 3/4 867 (900-2 3/4)

EC-3, 14 MAY 2026 to 11 JUN 2026

EC-3, 14 MAY 2026 to 11 JUN 2026