

WAAS CH 69641 W02A	APP CRS 023°	Rwy Ldg TDZE Apt Elev	5121 1936 1978
--	------------------------	-----------------------------	---

RNAV (GPS) RWY 2

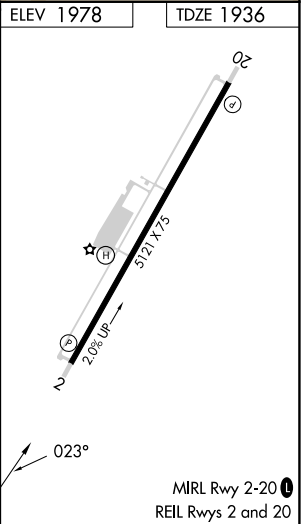
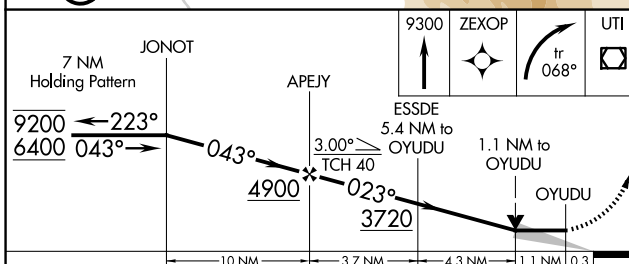
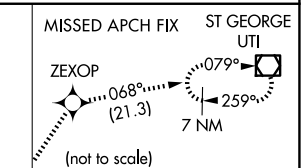
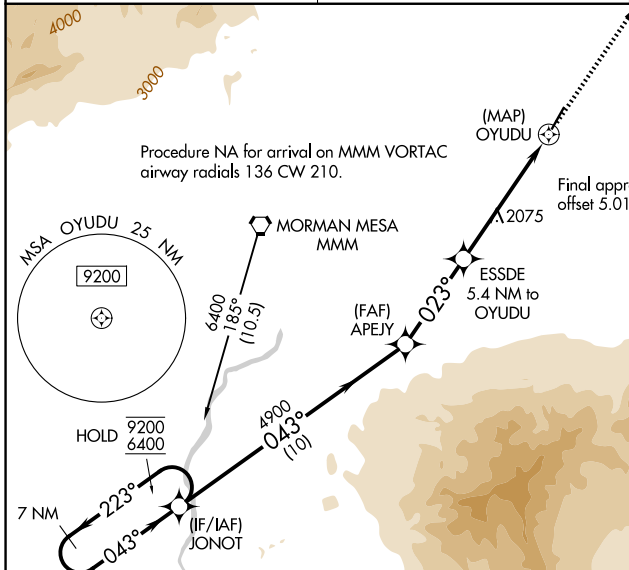
MESQUITE (67L)

RNP APCH.

NA VDP NA when using St George altimeter setting. When local altimeter setting not received, use St. George altimeter setting and increase all MDAs 200 feet and LP* and LNAV* Cats C/D visibility $\frac{1}{2}$ SM. Circling NA for Cat D west of Rwy 2-20. Circling Rwy 20 NA at night.

MISSED APPROACH: Climb to 9300 direct ZEXOP and climbing right turn on track 068° to UTI VOR/DME and hold, continue climb-in-hold to 9300.
*Misted approach requires minimum climb of 258 feet per NM to 6200.

AWOS-3 118.525	LOS ANGELES CENTER 124.2 343.6	UNICOM 122.8 (CTAF)
--------------------------	--	-------------------------------



CATEGORY	A	B	C	D
LP MDA*	2340-1	404 (400-1)	2340-1 $\frac{1}{8}$	404 (400-1 $\frac{1}{8}$)
LP MDA	3080-1 $\frac{1}{4}$ 1144 (1200-1 $\frac{1}{4}$)	3080-1 $\frac{1}{2}$ 1144 (1200-1 $\frac{1}{2}$)	3080-3	1144 (1200-3)
LNAV MDA*	2340-1	404 (400-1)	2340-1 $\frac{1}{8}$	404 (400-1 $\frac{1}{8}$)
LNAV MDA	3140-1 $\frac{1}{4}$ 1204 (1200-1 $\frac{1}{4}$)	3140-1 $\frac{1}{2}$ 1204 (1200-1 $\frac{1}{2}$)	3140-3	1204 (1200-3)
CIRCLING	3140-1 $\frac{1}{4}$ 1162 (1200-1 $\frac{1}{4}$)	3140-1 $\frac{1}{2}$ 1162 (1200-1 $\frac{1}{2}$)	3140-3	1162 (1200-3)