

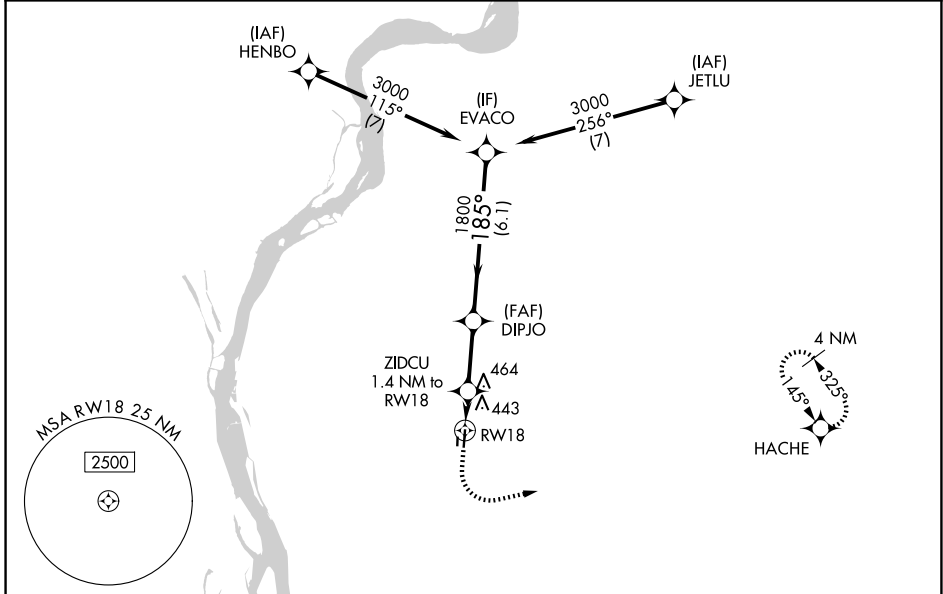
APP CRS	Rwy Ldg	3499
185°	TDZE	247
	Apt Elev	247

RNAV (GPS) RWY 18

CHARLES W BAKER (2M8)

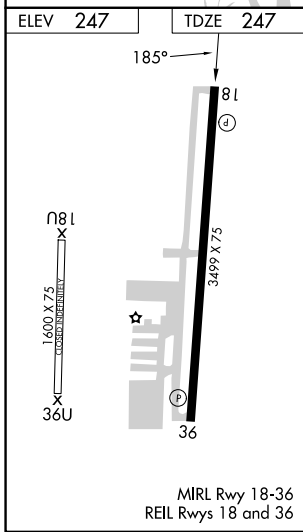
RNP APCH - GPS.		MISSED APPROACH: Climb to 1200 then climbing left turn to 3000 direct HACHE and hold.
▼ NA	Rwy 18 helicopter visibility reduction below 1 SM NA. When local altimeter setting not received, use Millington/Memphis altimeter setting and increase all MDA 40 feet; and LNAV Cat C visibility 1/8 SM and Circling Cat C visibility 1/4 SM. Straight-in Rwy 18 NA at night, Circling Rwy 18 NA at night.	

AWOS-3PT 119.575	MEMPHIS APP CON 125.8 338.3	UNICOM 122.8 (CTAF)
----------------------------	---------------------------------------	-------------------------------



SE-1, 14 MAY 2026 to 11 JUN 2026

SE-1, 14 MAY 2026 to 11 JUN 2026



1200	3000	HACHE	VGSI and RNAV glidepath not coincident (VGSI Angle 4.00/TCH 40).	
RWY 18	ZIDCU 1.4 NM to RWY 18	DIPJO	EVACO	
1.4 NM	2.5 NM	6.1 NM		
CATEGORY	A	B	C	D
LNAV MDA	780-1	533 (600-1)	780-1½ 533 (600-1½)	NA
CIRCLING	780-1 533 (600-1)	860-1 613 (700-1)	900-1¾ 653 (700-1¾)	NA