

| | | |
|--|------------------------|---|
| WAAS CH 72722 W17A | APP CRS 167° | Rwy Ldg 3799 TDZE 225 Apt Elev 225 |
|--|------------------------|---|

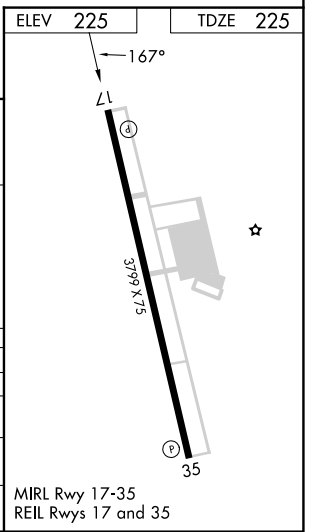
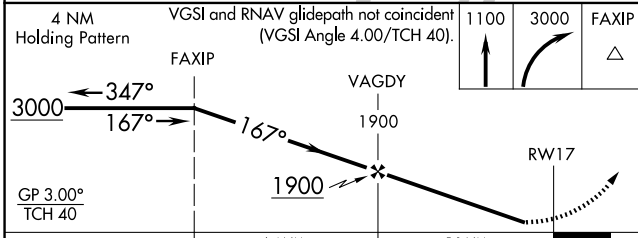
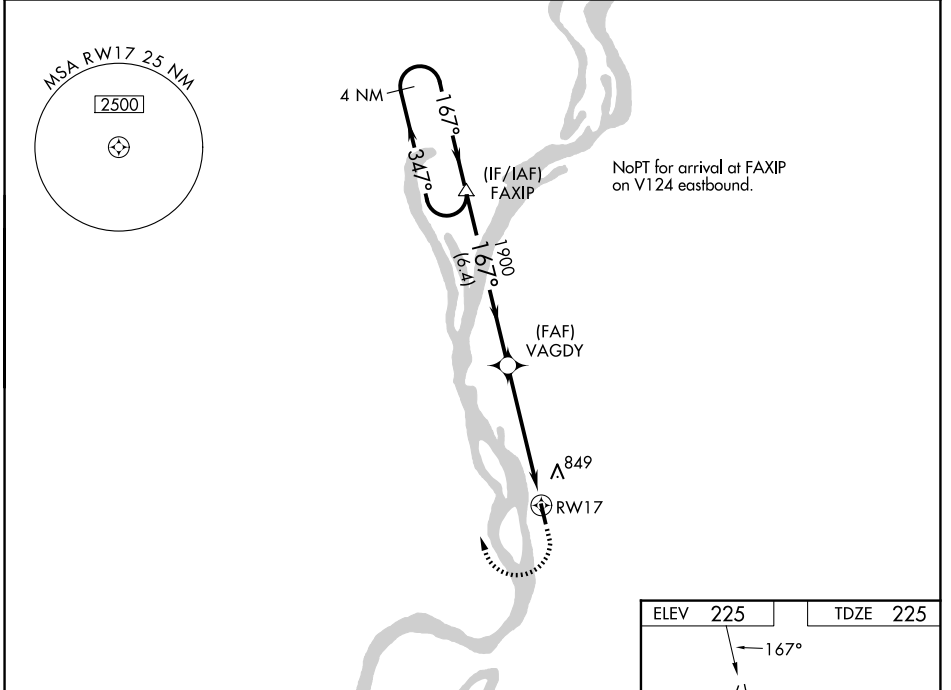
RNAV (GPS) RWY 17

GENERAL DEWITT SPAIN (M01)

▼ Baro-VNAV NA when using Frederick W Smith Intl altimeter setting. For uncompensated Baro-VNAV systems, LNAV/VNAV NA below -15°C (5°F) or above 54°C (130°F).
▲ NA DME/DME RNP-0.3 NA. When local altimeter setting not received, use Frederick W Smith Intl altimeter setting and increase all DA and MDA 40 feet and increase LNAV/VNAV visibility all Cats ¼ mile. Circling Rwy 35 NA at night. Rwy 17, helicopter visibility reduction below ¾ SM NA. Rwy 35, helicopter visibility reduction below 1 SM NA.

MISSED APPROACH:
Climb to 1100 then climbing right turn to 3000 direct FAXIP and hold.

| | | |
|---------------------------|---------------------------------------|-------------------------------|
| AWOS-3PT 118.35 | MEMPHIS APP CON 119.1 291.6 | UNICOM 122.7 (CTAF) |
|---------------------------|---------------------------------------|-------------------------------|



| CATEGORY | A | B | C | D |
|--------------|--------------------------|--------------------------|-------------------------|----|
| LPV DA | 475-1 | 250 (300-1) | | NA |
| LNAV/VNAV DA | 1016-3 | 791 (800-3) | | NA |
| LNAV MDA | 1020-1 795 (800-1) | 1020-1¼ 795 (800-1¼) | 1020-2½ 795 (800-2½) | NA |
| CIRCLING | 1200-1¼ 975 (1000-1¼) | 1200-1½ 975 (1000-1½) | 1200-3 975 (1000-3) | NA |