

# RNAV (GPS) RWY 31

COOPERSTOWN MUNI (S32)

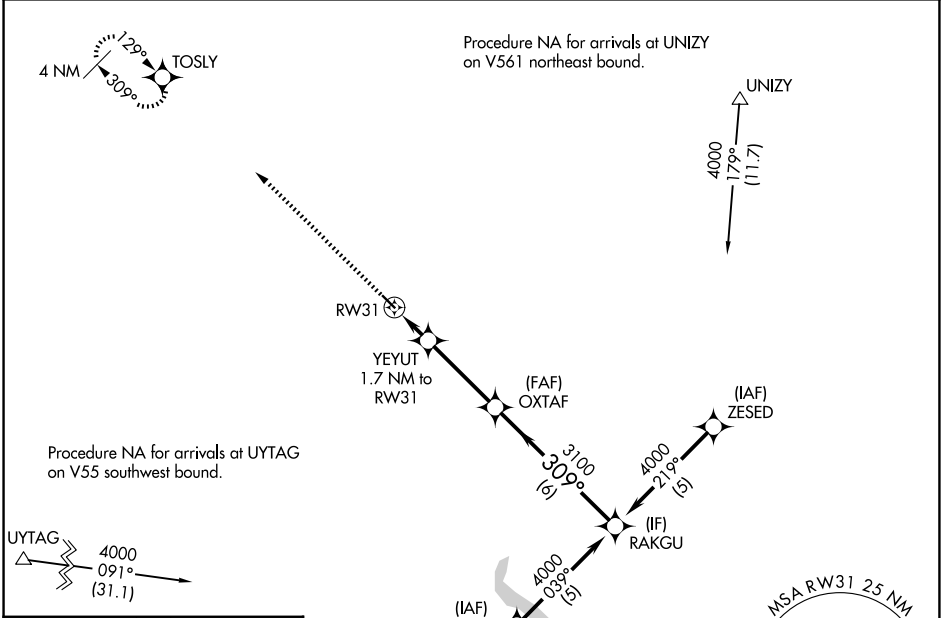
APP CRS <b>309°</b>	Rwy Ldg TDZE Apt Elev	<b>3500</b> <b>1424</b> <b>1424</b>
------------------------	-----------------------------	-------------------------------------------

RNP APCH - GPS.

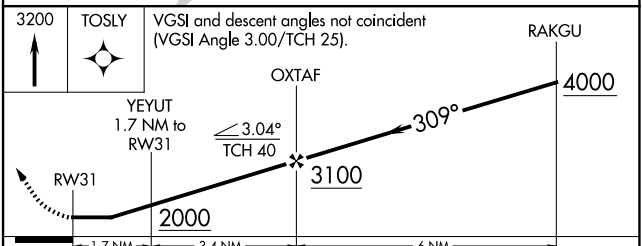
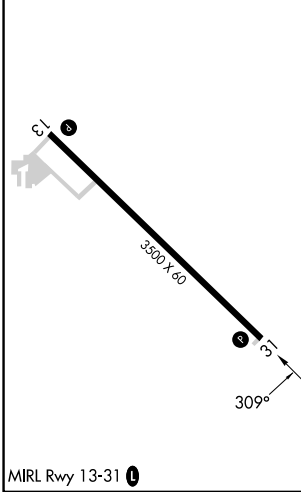
**⚠ NA** Rwy 31 helicopter visibility reduction below 1 SM NA. Procedure NA at night.  
When local altimeter setting not received, use JMS altimeter setting and increase all MDAs 100 feet and LNAV visibility Cat C 3/8 SM, and Circling visibility Cat C 1/4 SM.

MISSED APPROACH: Climb to 3200 direct TOSLY and hold.

AWOS-3 <b>118.75</b>	MINNEAPOLIS CENTER <b>132.15 269.6</b>	CTAF <b>122.9 0</b>
-------------------------	-------------------------------------------	------------------------



ELEV 1424	TDZE 1424
-----------	-----------



CATEGORY	A	B	C	D
LNAV MDA	1800-1			376 (400-1)
CIRCLING	1880-1 456 (500-1)	1900-1 476 (500-1)	1940-1½ 516 (600-1½)	NA

NC-1, 14 MAY 2026 to 11 JUN 2026

NC-1, 14 MAY 2026 to 11 JUN 2026