

APP CRS	Rwy Ldg	3600
292°	TDZE	1607
	Apt Elev	1607

RNAV (GPS) RWY 29

HARVEY MUNI (5H4)

RNP APCH - GPS.

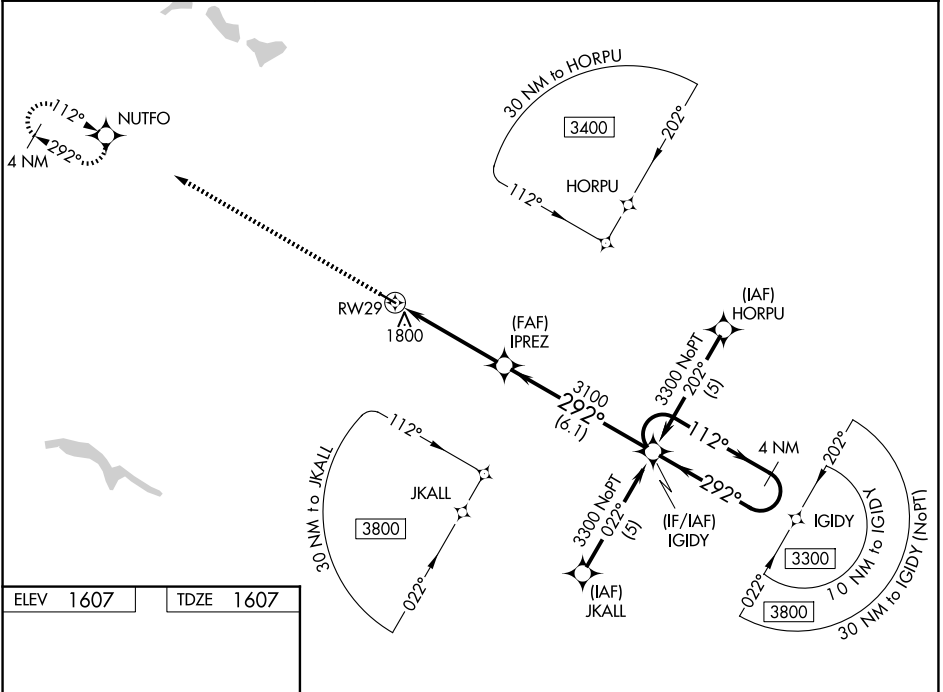
NA Circling Rwy 11 NA at night. For uncompensated Baro-VNAV systems, LNAV/VNAV NA below -18°C (0°F) or above 54°C (130°F). Baro-VNAV NA when using DVL altimeter setting. When local altimeter setting not received, use DVL altimeter setting: increase LNAV/VNAV DA to 2230 feet and all visibilities 3/8 SM; increase all MDAs 140 feet and LNAV visibility Cat C 3/8 SM and Circling visibility Cat C 1/2 SM.

MISSED APPROACH:
Climb to 3400 direct NUTFO and hold.

AWOS-3
118.825

MINNEAPOLIS CENTER
135.25 256.7

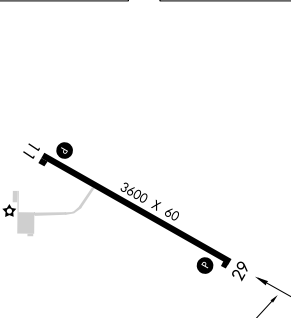
UNICOM
122.8 (CTAF) 0



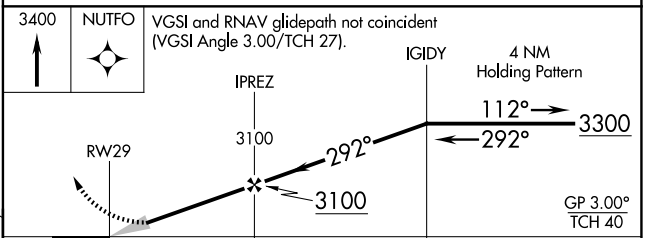
NC-1, 14 MAY 2026 to 11 JUN 2026

NC-1, 14 MAY 2026 to 11 JUN 2026

ELEV 1607	TDZE 1607
-----------	-----------



MIRL Rwy 11-29 0



CATEGORY	A	B	C	D
LNAV/VNAV DA	2100-1 3/8 493 (500-1 3/8)			NA
LNAV MDA	2100-1	493 (500-1)	2100-1 3/8 493 (500-1 3/8)	NA
CIRCLING	2120-1	513 (600-1)	2300-2 693 (700-2)	NA