

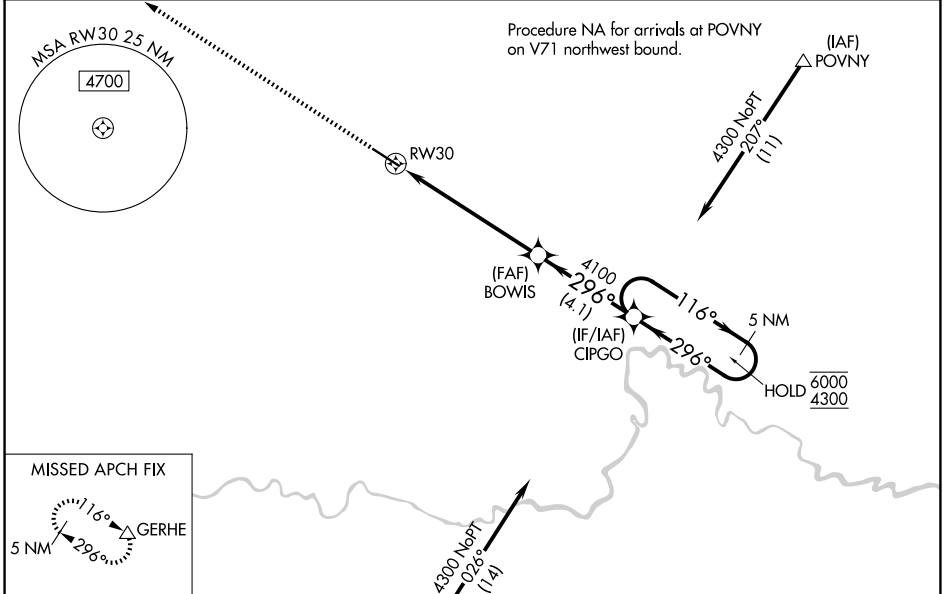
WAAS CH <b>69318</b> <b>W30A</b>	APP CRS <b>296°</b>	Rwy Ldg TDZE Apt Elev	<b>5650</b> <b>2131</b> <b>2135</b>
----------------------------------------	------------------------	-----------------------------	-------------------------------------------

# RNAV (GPS) RWY 30

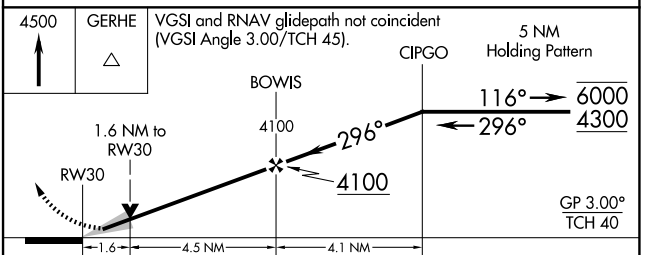
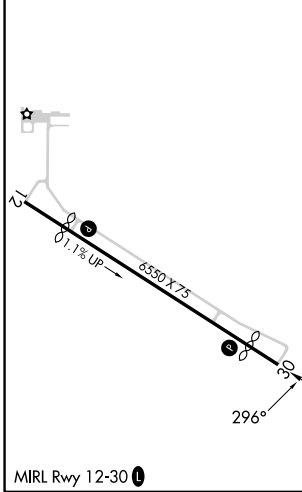
WATFORD CITY MUNI (S25)

RNP APCH - GPS.	<p>VDP NA when using Williston altimeter setting. When local altimeter setting not received, use Williston Basin Intl altimeter setting; increase LPV DA to 2488 feet; all visibility ¼ SM. Increase all MDAs 120 feet and LNAV visibility Cat C/D ¼ SM, and Circling visibility Cat C/D ½ SM.</p>	<p>MISSED APPROACH: Climb to 4500 direct GERHE and hold.</p>

AWOS-3PT <b>118.125</b>	SALT LAKE CENTER <b>126.85 305.2</b>	UNICOM <b>122.8 (CTAF) 0</b>
----------------------------	-----------------------------------------	---------------------------------



ELEV 2135	<b>D</b>	TDZE 2131
-----------	----------	-----------



CATEGORY	A	B	C	D
LPV DA	2381-¾		250 (300-¾)	
LNAV MDA	2680-1	549 (600-1)	2680-1½	549 (600-1½)
CIRCLING	2700-1 565 (600-1)	2760-1 625 (700-1)	2760-1¾ 625 (700-1¾)	2960-2¾ 825 (900-2¾)

NC-1, 14 MAY 2026 to 11 JUN 2026

NC-1, 14 MAY 2026 to 11 JUN 2026